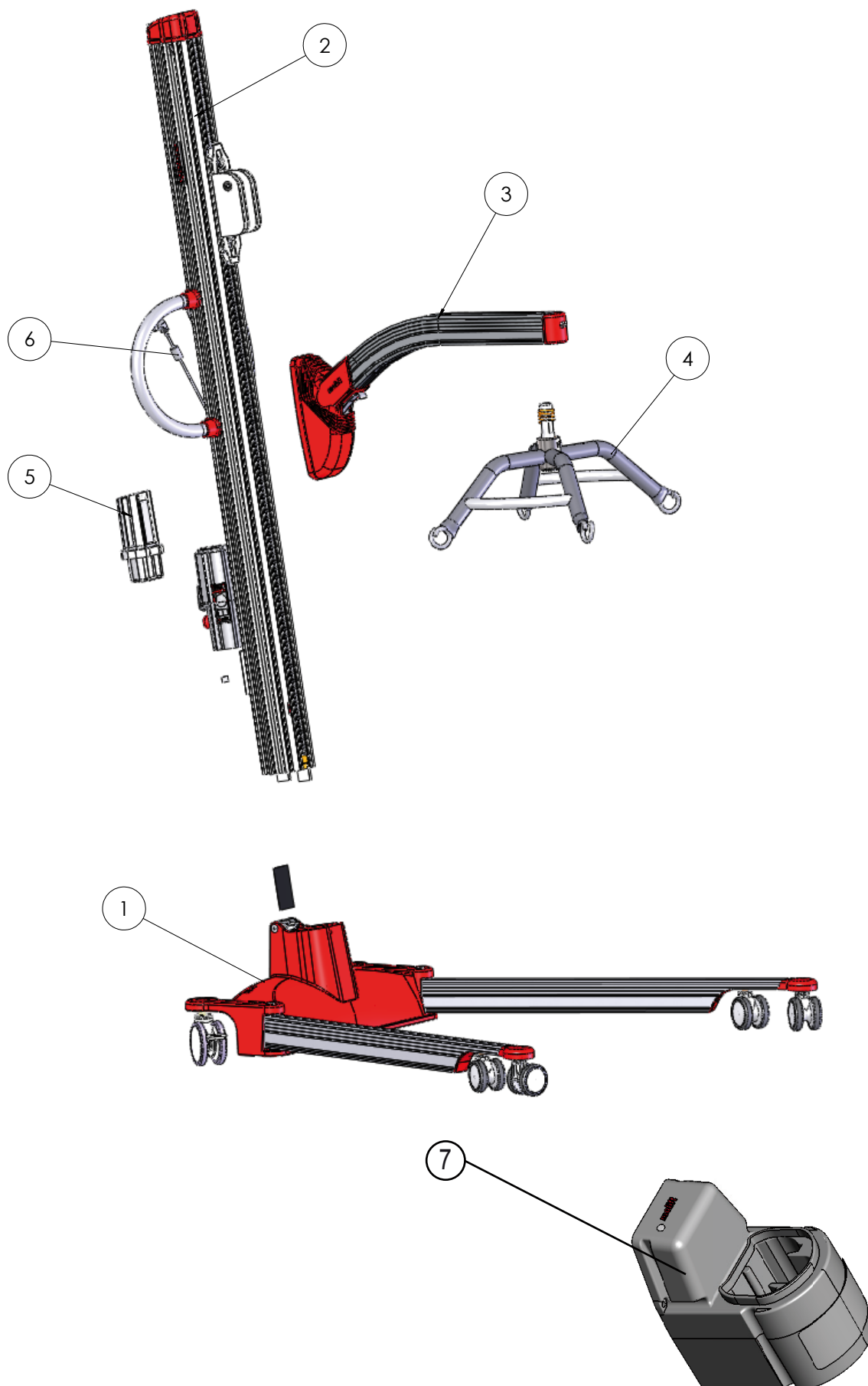


# Appendix A

Pos.	Part.no	Fig	Description
1	1320001	App B	Chassis Complete P230/255
1	1320002	App G	Chas. Compl.low legs P230/255
2	1311002	App D	Column Complete P255
2	1311052	App H	Column w. Supporting arms P255
3	1330099	App F	Arm Standard P255
3	1331002	App F	Arm Scale P255
4		App G	Alternative Suspension
	1330053		Suspension 4pkt. LP230/255
	1330052		Suspension 4pkt. Steel X-large
	1330054		Suspension 4pkt. Steel Medium
	1330055		Suspension 2pkt. Steel Large
	1330056		Suspension Steel 2pkt. Medium
	2140002		Suspension 8pkt. P230
5	1341000		Battery
6	2018004		Hand control, Molift Partner 230
7	1340100		Battery Charger
8		App I	Electrical system
	1140105		Plug Europe
	1140106		Plug Great Britain
	1140104		Plug USA
	1140107		Plug Australia

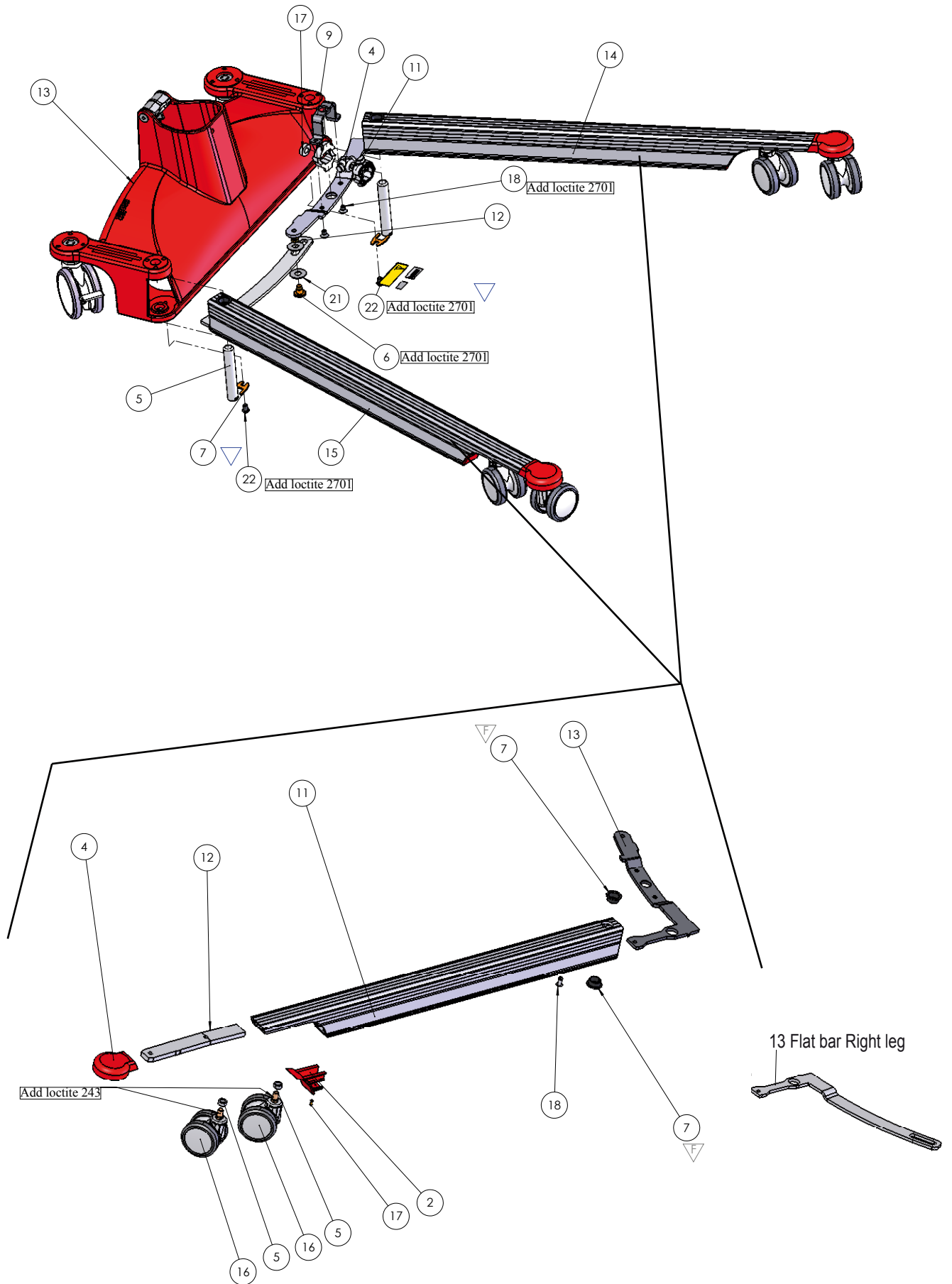

## Main parts



# Appendix B

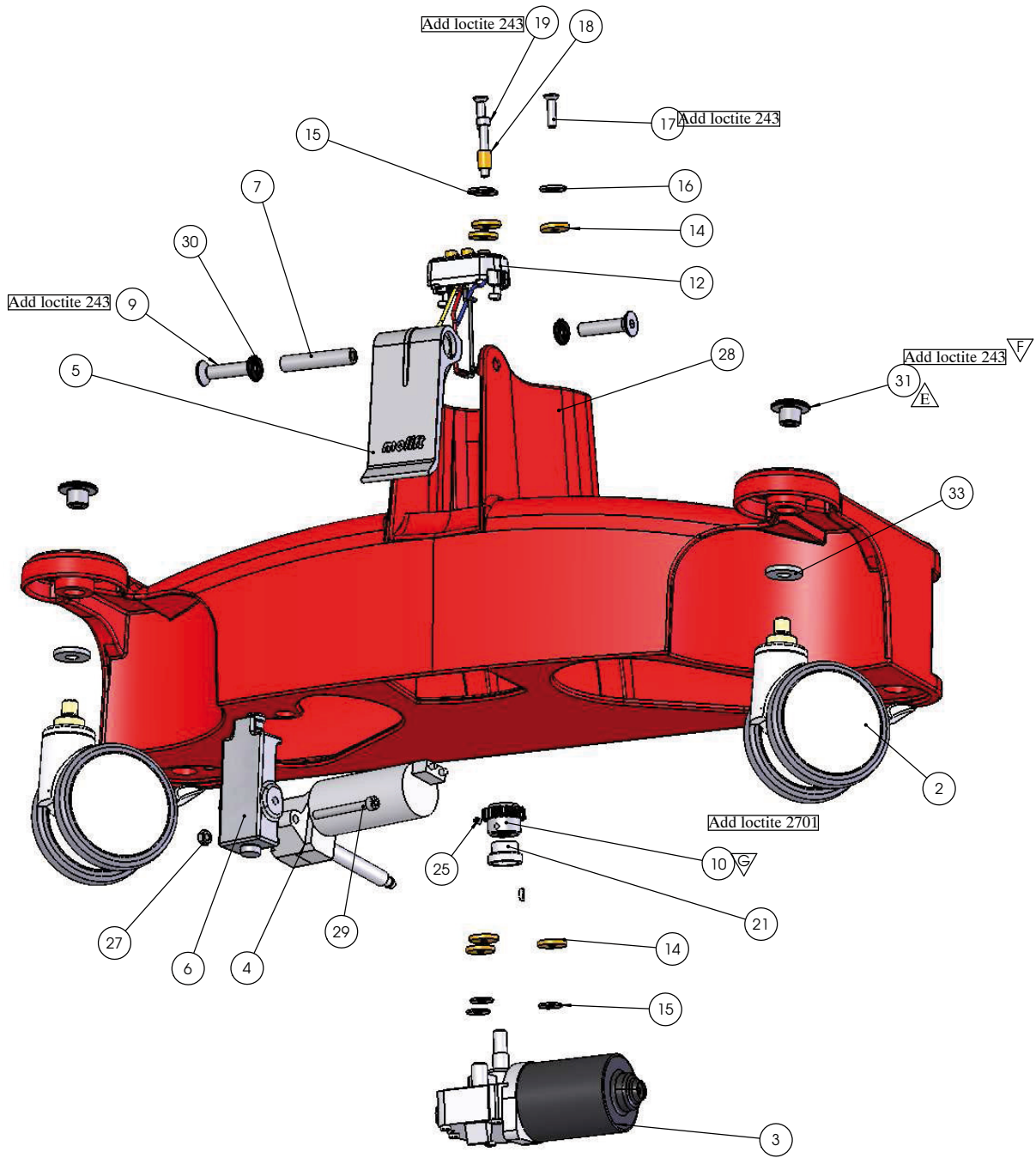
Pos.	Part. no.	Qty	Description
1			
2			
3			
4	1320117	1	Nut spindle
5	1320121	2	Bolt for leg
6	1320122	1	Bolt leg spread mech 205
7	1320119	2	Locking plate
8			
9	1320114	1	Bracket Leg spreading P205/255
10			
11	1320116	2	Nut holder, P230
12	0228138	2	Bushing bronze 5MM
13	App C	1	Chassie assembly, see App C
14	1320501	1	Left Leg Assy P230/P255, see pos 14.2-14.18
15	1320502	1	Right Leg Assy P230/P255 see pos 14.2-14.18
16			
17	1320131	1	PUR ring, 90 shore ø12x25x7
18	1320206	2	Screw DIN 7991 M8X12 8.8 ELZN
19	0220309	1	Label, Authorized Crew Only
20	0421135	1	Decal: ID,no
21	1320123	2	Washer, Nylon ø31,7xø13x1,6
22	1120506	2	Screw ISO7380 M8x12 ElZn
26		1	Label controlled sign
			Leg, left and right (pos 14 and 15)
14.2	1320102	1	Cover, Leg, Partner 205
14.4	1320104	1	Shock cap, leg P230
14.5	1320105	2	Spacer for wheel P205/230/255
14.7	0910180	2	Bushing, Flanged TFF 20115
14.11	1320101	1	Leg P230/255
14.12	1320103	1	Steel inforcement P230/255
14.13	1420106	1	Bar, flat for leg, left
14.13	1420111	1	Bar, flat for leg, right
14.16	0920107	2	Wheel Ø75mm without Brake
14.17	1320110	1	Rivet Dowel ø3x10
14.18	1410118	1	Monobolt ø6,4x19


## Chassie with legs





Chassis and motors

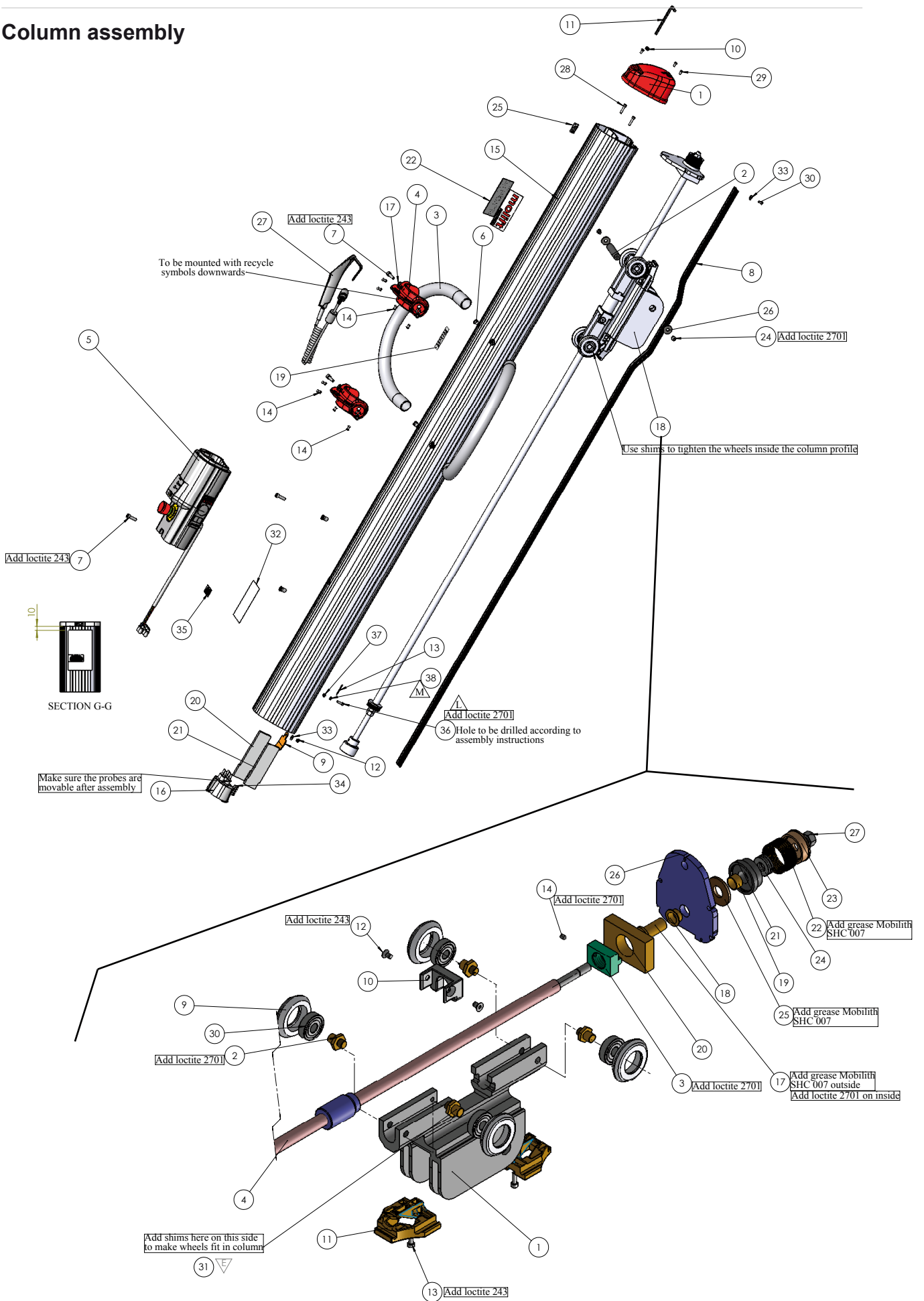


## Appendix D

Pos.	Part. no.	Qty	Description
1	1310117	1	Top Cap Column P230
2	1310118	1	Lock Pin Trolley
3	0910107	2	Drive handle, Smart/205
4	1310119	2	Bracket drive handle P205-255
5	1411510	1	Batt.holder assy P205/P230-255
6	0920216	6	Rivet Nut M6x16,5 UKO 55 st.
7	1220120	6	Housing Nomad
8	1310103	1,8	Rubber profile P230/255
9	1310129	1	Fixing plate
10	0410117	1	Cable Gland RG2
11	1120505	1	Allen Key 5mm
12	1320205	1	Dowel Rivet DIN7337 ø4x6 A2
13	0210304	1	Label: Arrow 30x7mm Red
14	1450120	8	Rivet DIN 7337 Dim. 4 x 16
15	1310101	1	Column machined P230
16	1310127	1	Contact P230
17	0220121	4	Washer DIN 9021 Ø6,4 Elzn
18	1311501	1	Trolley w spindel assy, see 18.1 to 18.31
19	0210305	1	Label: Slinglabel (XXS-XXL)
20	1410102	1	Flat Bar Column Left
21	1410103	1	Flat Bar Column Right
22	0210308	2	Label Partner logo
23	1310123		Electric diagram
24	0220119	2	Screw ISO 7380 M6X10 Elzn.
25	1310303	1	Label Emerg. Stop (brady)
26	1330115	2	Washer SRKB 7x25x1,5 Elzn
27	2018004	1	Hand Control Partner/QR2
28	1320201	2	Screw DIN 912 M4X20 ELZN
29	1101532	3	Screw ISO 7045 M4X8 TORX
30	1320203	1	Screw ISO 7380 M4X8 ELZN
31			
32	1310302	1	Label, Technical data P255
33	0310120	2	Washer DIN 9021 DIM 4 Elzn
34	1310307	1	Label, Controlled date/sign.
35	0421135	1	Decal: ID,no
36	1410137	1	Screw DIN912 M4x14 Elzn 8.8
37	1150133	1	Lock Nut DIN 985 M4 Elzn
38	1420521	1	Sleeve column ass.P205/P230
18.1	1310113	1	Trolley, column P230/P255
18.2	1310109	4	Bearing Axle Trolley
18.3	1310116	1	Guide Sleeve Trolley
18.4	1310102	1	Ball Screw Partner 230
18.5	0210114	5	Spring, Cup 34x12x1,25
18.6	1320210	2	Nut DIN 439 B M12x1,25

18.7			
18.8			
18.9	1310110	4	Wheel Trolley
18.10	1310107	1	Distance plate Trolley
18.11	1310108	2	Guide Sealing Trolley
18.12	1320207	2	Screw DIN 7991 M6X10 8.8 Elzn
18.13	1320209	2	Screw DIN 912 M5X16 8.8 ELZN
18.14	1320124	1	Screw DIN 914 M5X8 A2
18.15	0210117	1	Female Connector Partner (M12)
18.16			
18.17	1310115	1	Sleeve Brake Trolley
18.18	1310141	1	Flanged bearing PAF 15090 P10
18.19		1	Slide bearing PAP 1510 P10, see pos 18.32
18.20		1	End stopper, column, see pos 18.32
18.21		1	Bearing house lower, column, see pos 18.32
18.22		1	Spring brake, column, see pos 18.32
18.23		1	Bearing house upper, column, see pos 18.32
18.24		1	Thrust ball bearing TYPE 51103, see pos 18.32
18.25		1	Brake washer, column P255, see pos 18.32
18.26	1310134	1	Top Plate Column P230/255
18.27		1	Nut, Lock DIN 985 M10 Elzn, see pos 18.32
18.28	1101511	1	Spring pin DIN 1481 6x24
18.29	0210115	1	Washer 12,5x35x2 Elzn
18.30	1310140	4	Ball Bearing type LR 201 NPPU
18.31	1310137	6	Shims DIN/ISO 988 ø12xø18x0,3
			Brake column set P230/P255, incl pos 18.19,
18.32	1310501	1	18.20, 18.21, 18.22, 18.23, 18.24, 18.25, 18.27

## Column assembly

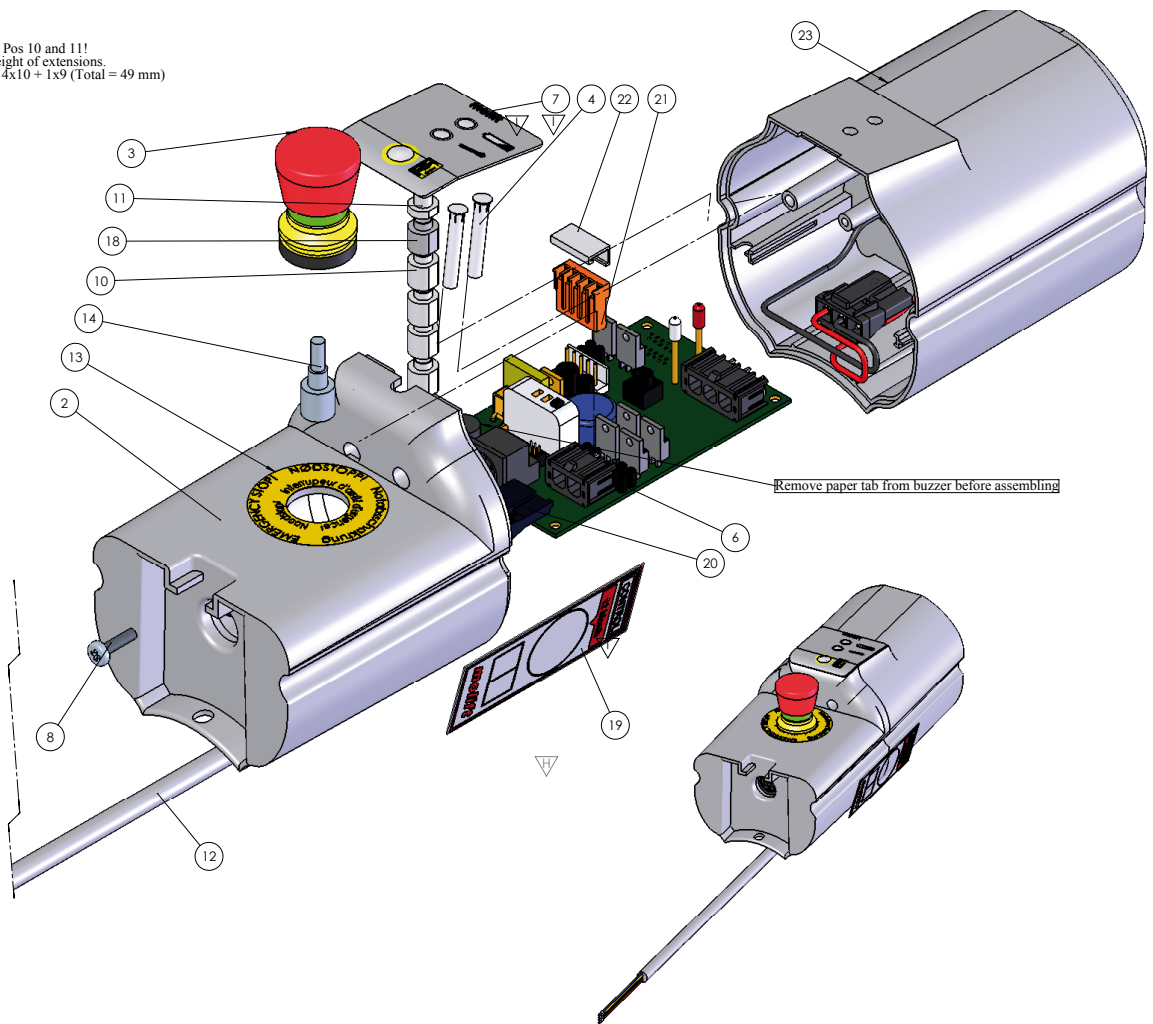






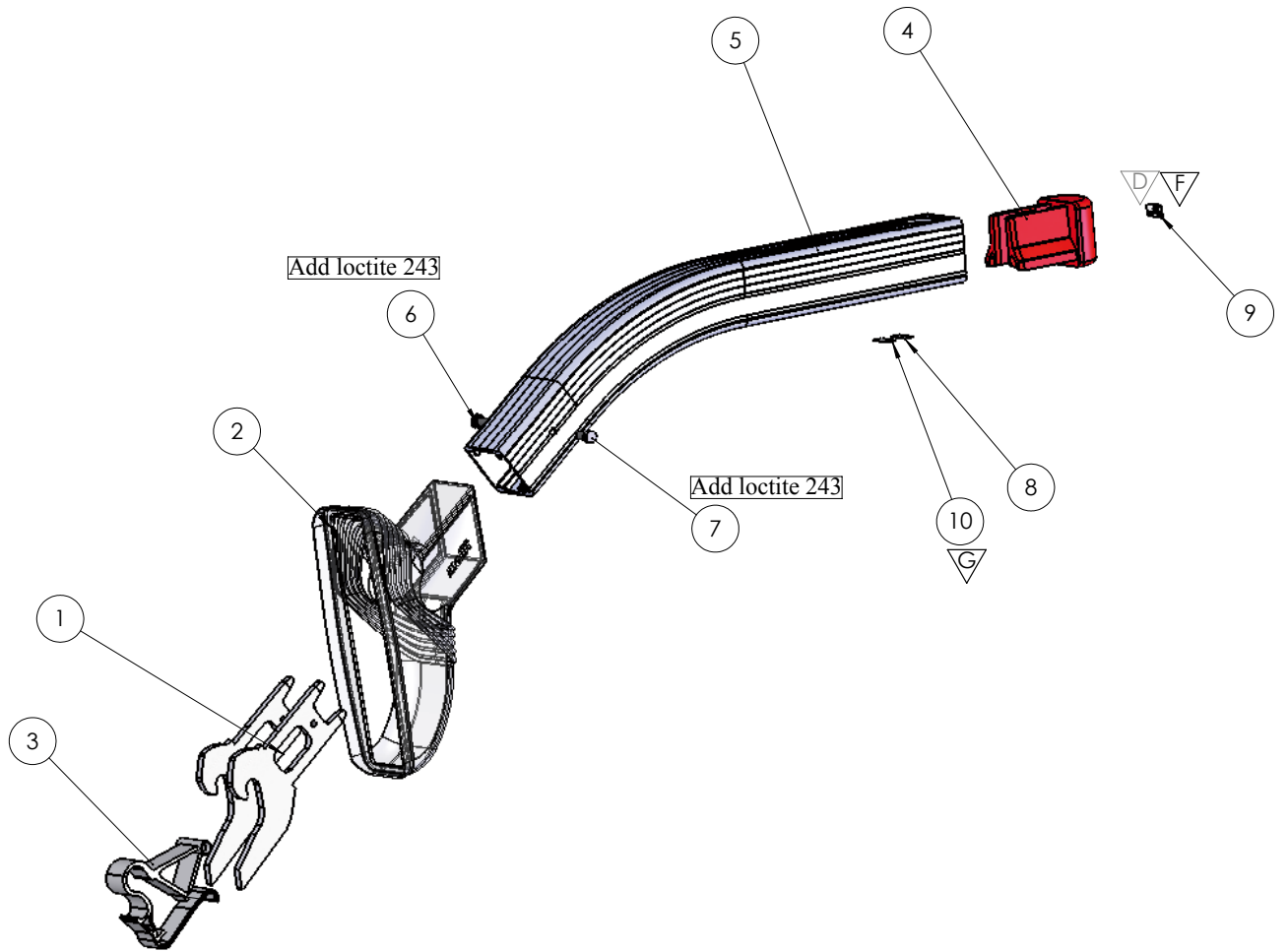
## Battery holder assembly

Note for Pos 10 and 11!  
 Check height of extensions.  
 Height = 4x10 + 1x9 (Total = 49 mm)



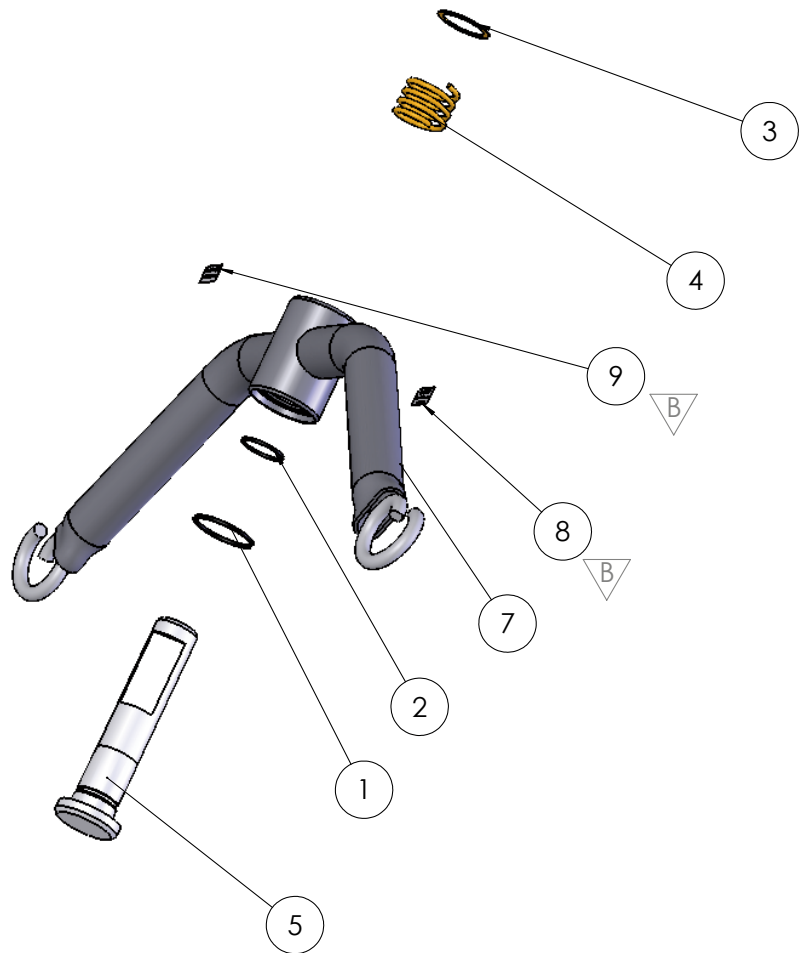
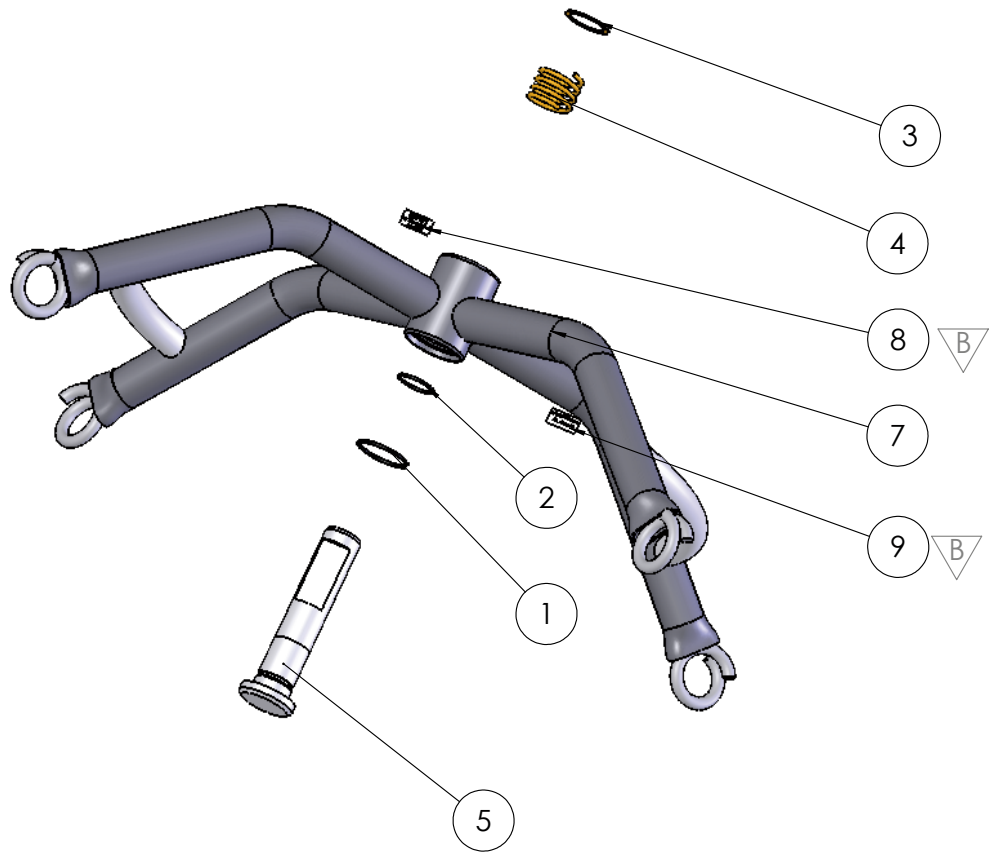


## Lifting arm





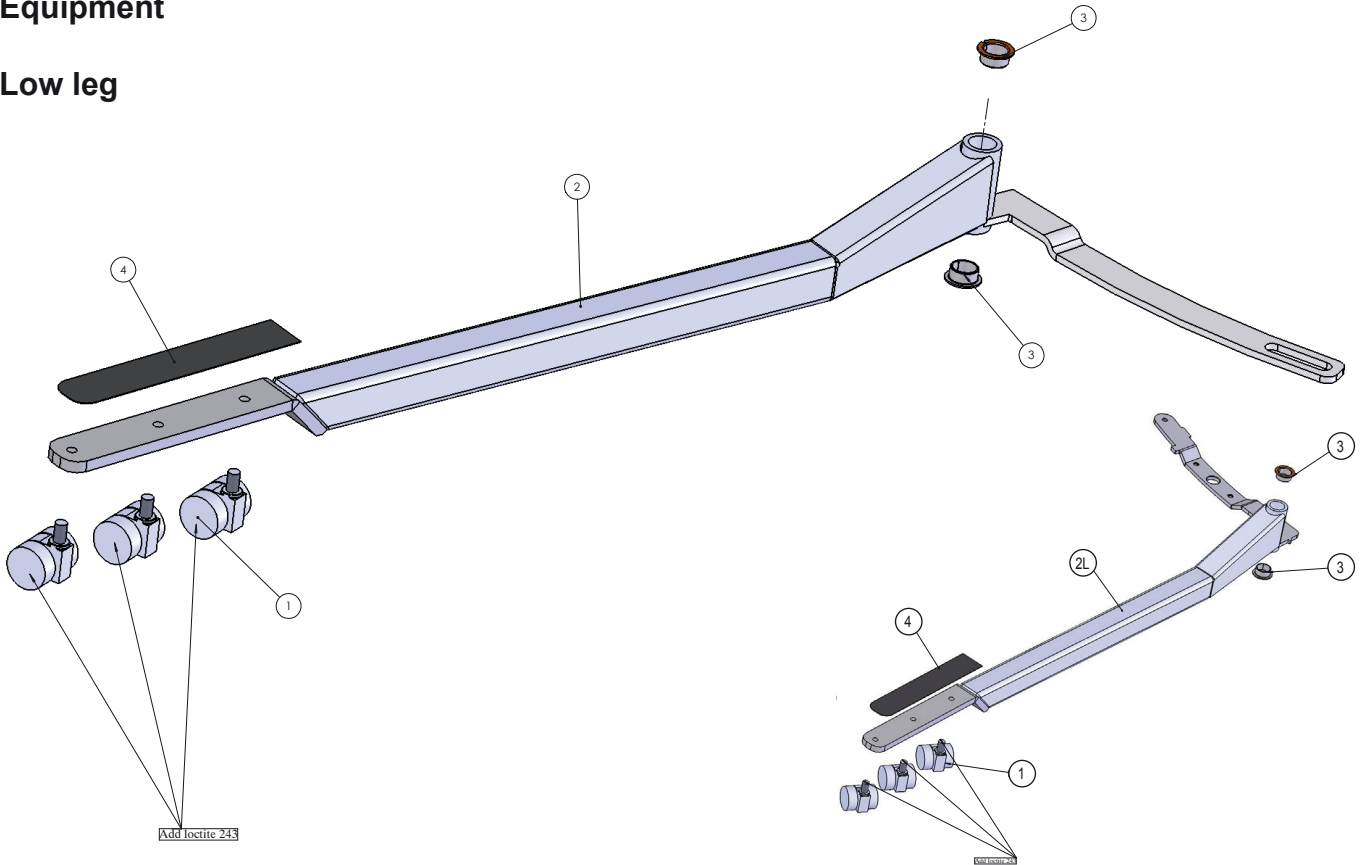
## Suspensions





## Equipment

### Low leg



### Supporting arms

