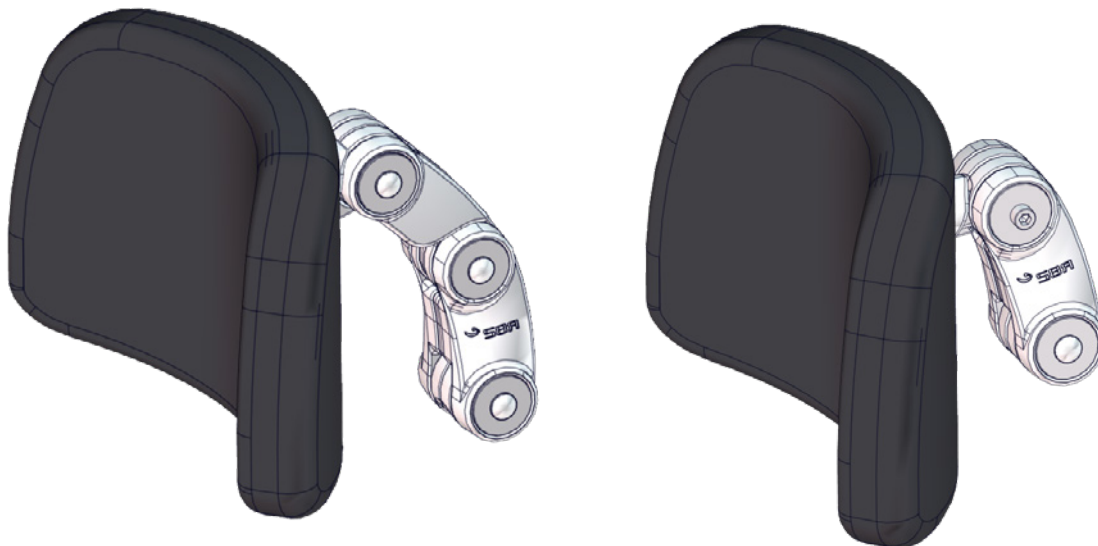


# Head supports

## Exploded views / Part lists

Rev. date (2025.07)

On the following pages you will find the parts used to assemble this product. Please note that some spare parts cannot be purchased individually but are part of a complete kit. Please also note that for some spare parts extra delivery time may occur.



## Contents

Head support assembly ..... 3  
    Item numbers for Head support assembly ..... 4

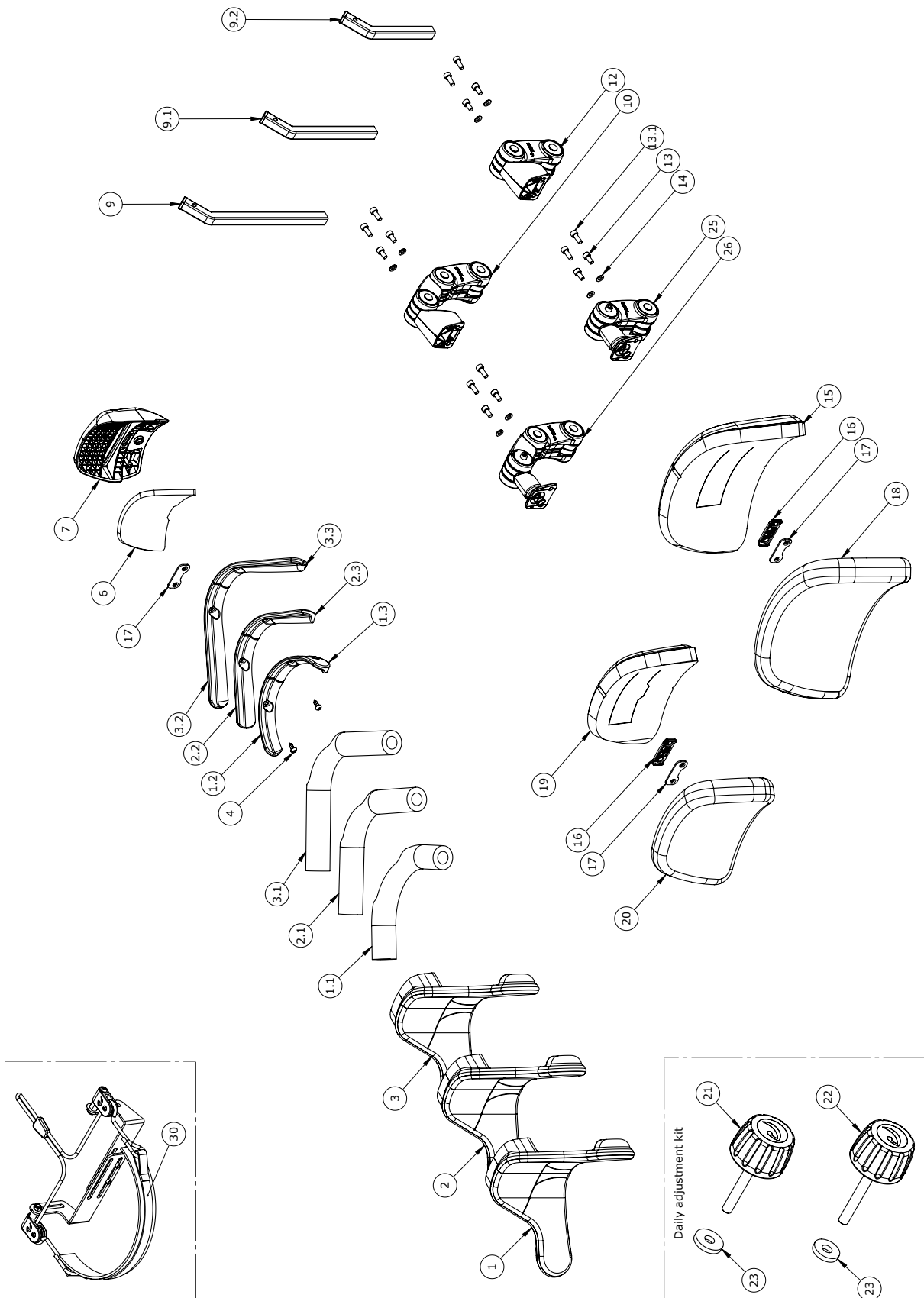
Turtle bar system standard..... 5  
    Item numbers for Turtle bar system standard..... 6

Turtle bar system standard 3D..... 7  
    Item numbers for Turtle bar system standard 3D..... 8

Turtle bar system extended ..... 9  
    Item numbers for Turtle bar system extended ..... 10

Turtle bar system extended 3D ..... 11  
    Turtle bar system extended 3D ..... 12

Head support assembly

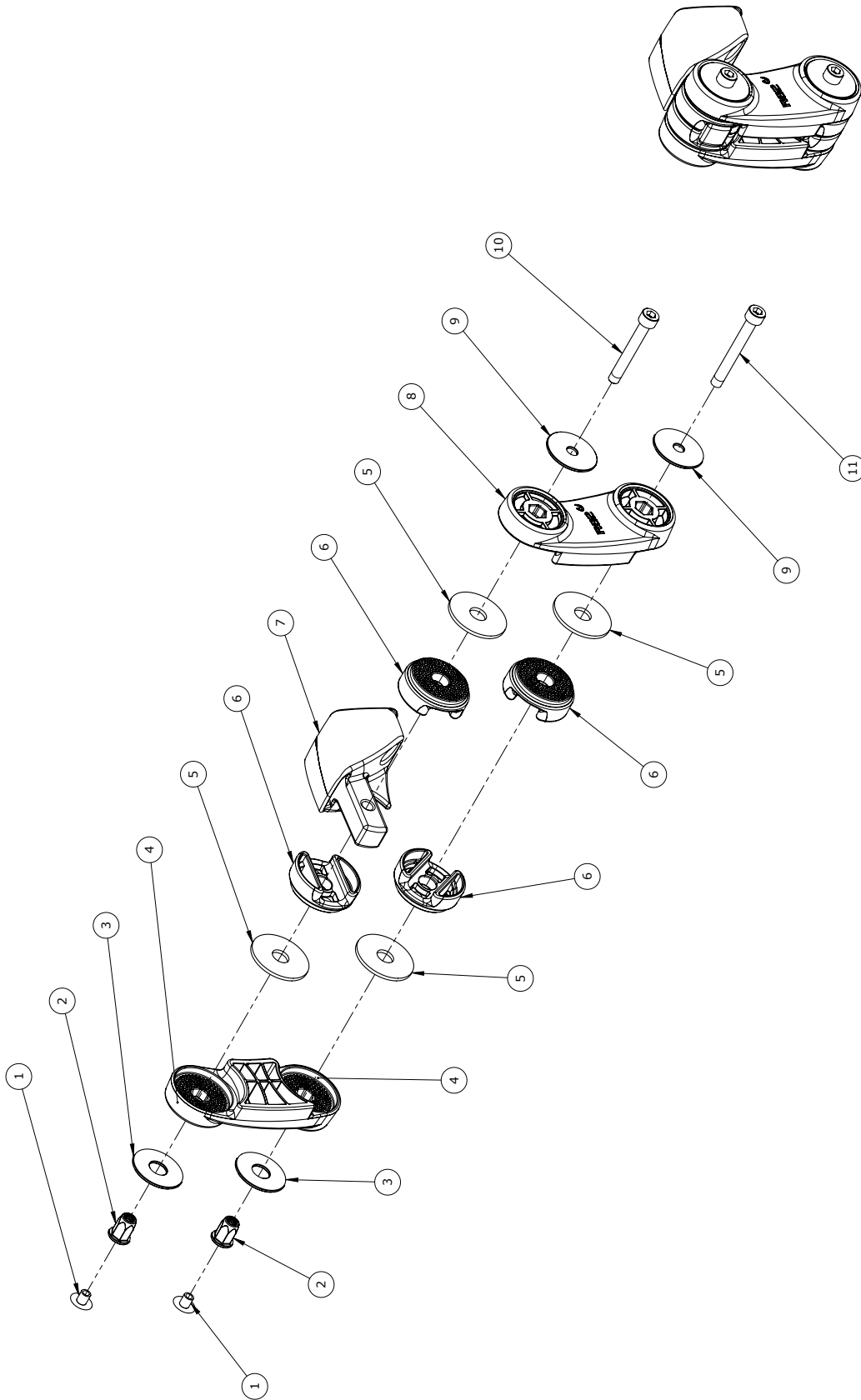


## Item numbers for Head support assembly

Position	No.	Description		Quantity	Unit of Measure	Ean code
1*	151109-80	Cover anat.head sup.240x130	Cover Indurance	1	PCS	5707292960689
	151109-70	Cover anat.head sup.240x130	Cover Indurance	1	PCS	5707292960672
1.1	6175202	Foam tube anat. headsup. s.1		1	PCS	5707292436405
1.2	71451	Neck support left size 1		1	PCS	5707292415998
1.3	71452	Neck support right size 1		1	PCS	5707292416001
2*	153073-70	Cover anat.head sup.260x130	Cover Indurance	1	PCS	5707292960696
	153073-80	Cover anat.head sup.260x130	Cover Ipanima	1	PCS	5707292960702
2.1	6175206	Foam tube anat. headsup. s.2		1	PCS	5707292436429
2.2	71453	Neck support left size 2		1	PCS	5707292416018
2.3	71454	Neck support right size 2		1	PCS	5707292416025
3*	153074-70	Cover anat.head sup.320x130	Cover Indurance	1	PCS	5707292960719
	153074-80	Cover anat.head sup.320x130	Cover Ipanima	1	PCS	5707292960726
3.1	6175204	Foam pipe f. anatomic headrest	Size 3	1	PCS	5707292436412
3.2	71455	Neck support left size 3		1	PCS	5707292416032
3.3	71456	Neck support right size 3		1	PCS	5707292416049
4	1940027	Ecosyn phx 5x14 Torx FZB	M5x14-pn-fzb-torx	2	PCS	5707292577818
6	5502647	Udsk.neopren t/ana.hovedst.	Anatomisk hovedstøtte	1	PCS	5707292418142
6+7	5700262	Oplime basisplade hovedstøtte	Anatomisk hovedstøtte	1	PCS	5707292964373
7	153812	Anatomic Headrest plate		1	PCS	5707292949424
8	138876	3D Head Support mount	for headrest	1	PCS	5707292946102
9	178452	Turtle bar mounted		1	PCS	5715393031986
9.1	167361	Turtle bar Medium		1	PCS	5707292971098
9.2	167360	Turtle bar short		1	PCS	5707292971104
10	149416	Turtle bar system extended		1	PCS	5707292960399
12	149371	Turtle bar system standard	For Headrest	1	PCS	5707292964687
13	0602190	Insex screw 6x12		2	PCS	5707292138088
13.1	0602200	Insex screw 6x16		2	PCS	5707292138095
14*	1103000	Fazet washer 6mm		2	PCS	5707292140289
	1103000	Fazet washer 6mm		2	PCS	5707292140289
15	158271	Curved head supp.	H:160xW:260	1	PCS	5707292964984
16*	149635	Base for double nut		1	PCS	5707292949431
	149635	Base for double nut		1	PCS	5707292949431
17	139536	Double nut M6 - L34		1	PCS	5707292935779
18*	153446-70	Cover Head support size260x160	Indurance	1	PCS	5707292960597
	153446-80	Cover Head support size260x160	Black Ipanima	1	PCS	5707292960603
19	158279	Curved head supp.	H:130xW:180	1	PCS	5707292964977
20*	153445-80	Cover Head support size180x130	Black Ipanima	1	PCS	5707292960580
	153445-70	Cover Head support size180x130	Indurance	1	PCS	5707292960573
21	149393	R82 handle M6 x 40		1	PCS	5707292960450
22	149402	R82 handle M6 x 45		1	PCS	5707292960443
23	1125618	Screenwasher fz6x18x3mm		2	PCS	5707292140494
24	138215	Washer 6x30x1,5 black		1	PCS	5707292940544
30	99500-5	Head band system, complete	for anatomic head supports	1	PCS	5715393022021
MODUL	5099021	Curved hovedstøtte str.1		1	PCS	5707292964519
MODUL	5099022	Curved hovedstøtte str.2		1	PCS	5707292964526
MODUL	5099023	Anatomisk hovedstøtte str.3		1	PCS	5707292964533

\* Choose size / color

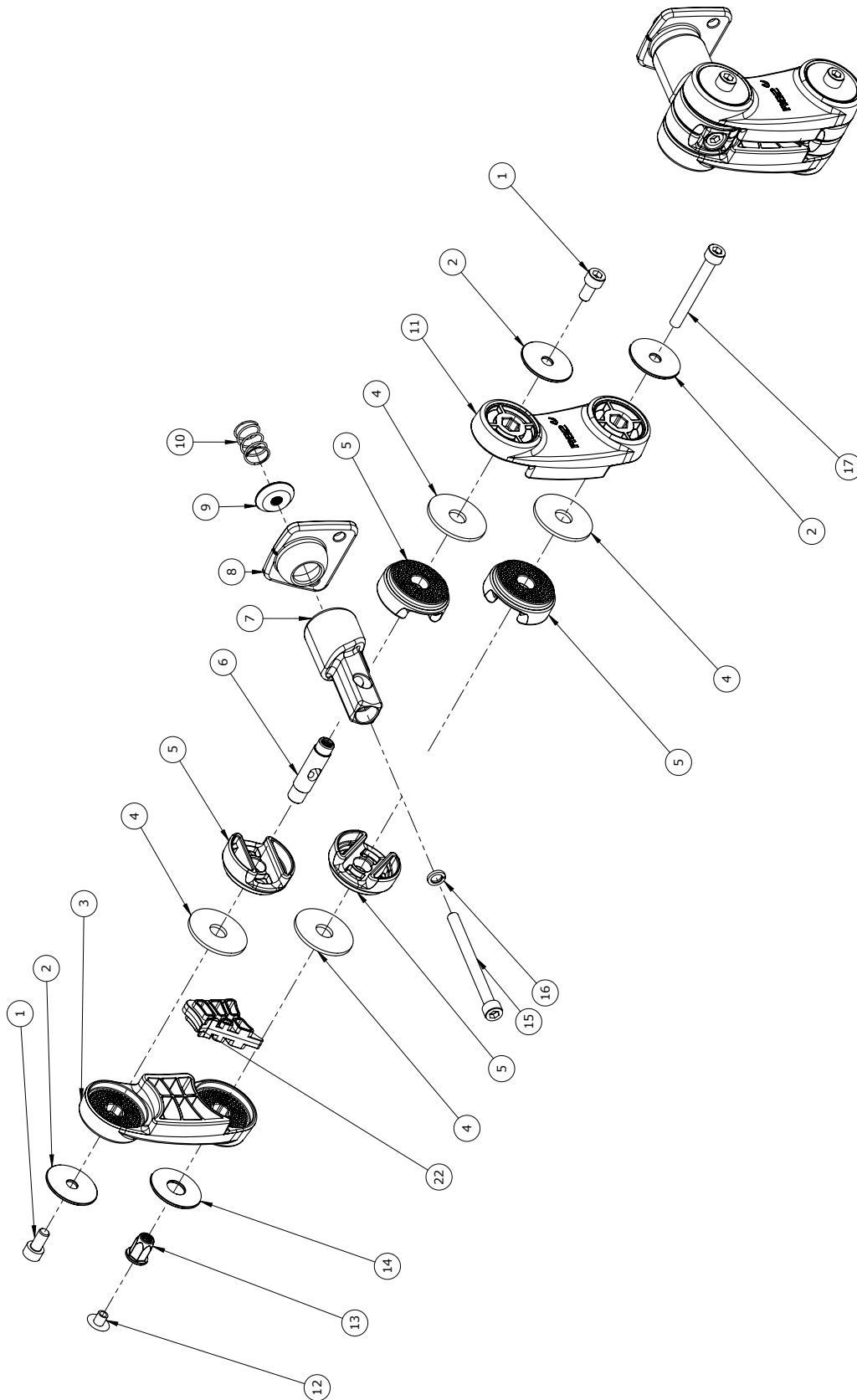
## Turtle bar system standard



## Item numbers for Turtle bar system standard

Position	No.	Description	Quantity	Unit of Measure	Ean code
1	1310528	Covering stud, black 13mm	2	PCS	5707292470348
2	506510	Blindnit M6x14,5	2	PCS	5707292938596
3	141792	Washer Ø10/Ø30x1,5	2	PCS	5707292964793
4	138240	Arm left	1	PCS	5707292964809
5	138214	Friction Disc Ø34	4	PCS	5707292964816
6	138236	Disc Ø38	4	PCS	5707292964823
7	141786	Center arm	1	PCS	5707292964847
8	138237	Arm Right	1	PCS	5707292964830
9	138215	Washer 6x30x1,5 black	2	PCS	5707292940544
10	602445	Insex M6x45 FZB	1	PCS	5707292138156
11	602446	Insex M6x50 FZB	1	PCS	5707292995155

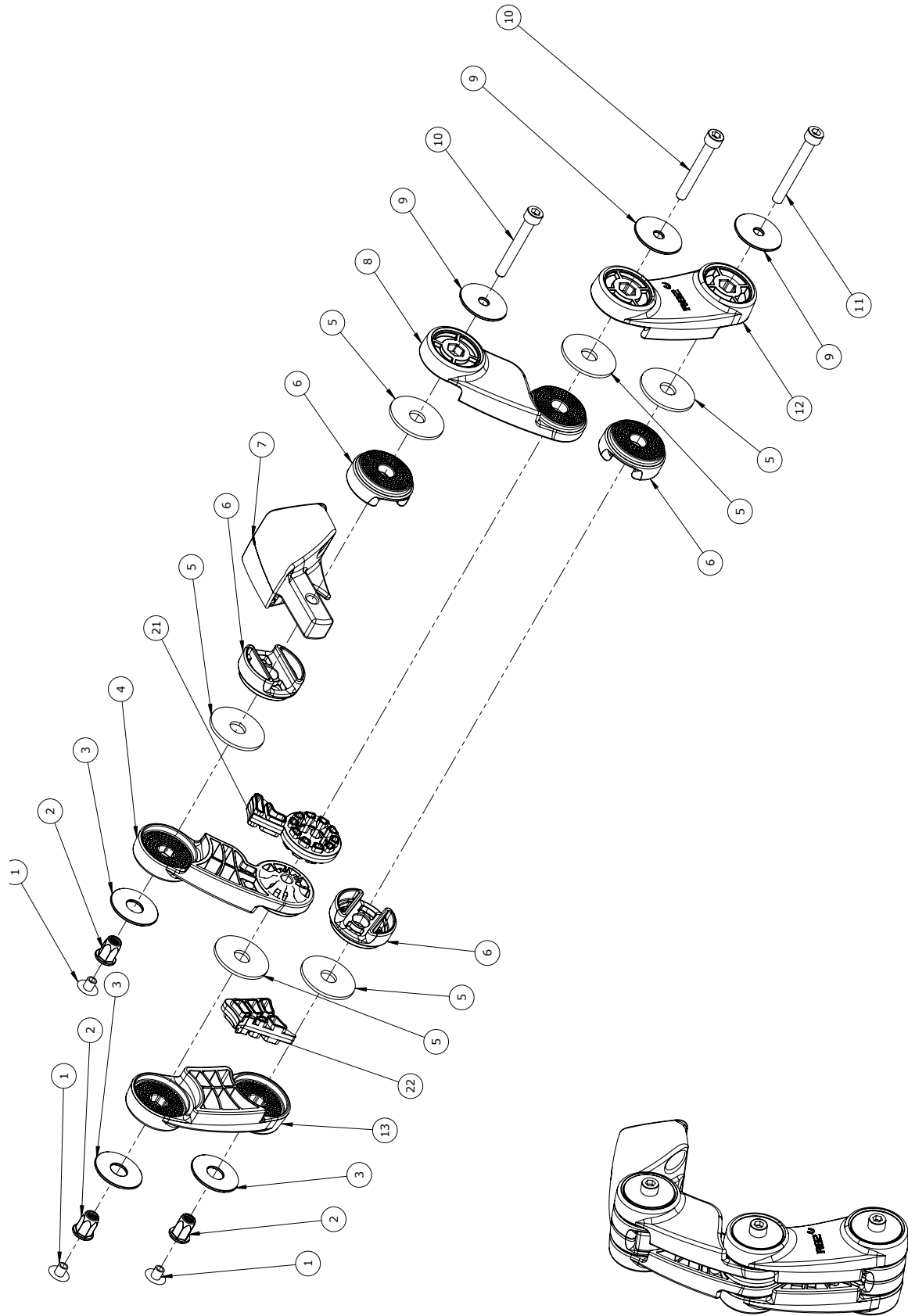
### Turtle bar system standard 3D



## Item numbers for Turtle bar system standard 3D

Position	No.	Description	Quantity	Unit of Measure	Ean code
1	602190	Insex screw 6x12	2	PCS	5707292138088
2	138215	Washer 6x30x1,5 black	3	PCS	5707292940544
3	138240	Arm left	1	PCS	5707292964809
4	138214	Friction Disc Ø34	4	PCS	5707292964816
5	138236	Disc Ø38	4	PCS	5707292964823
6	141790	Ø10 axle M6	1	PCS	5707292950307
7	138289	3D arm	1	PCS	5707292950291
8	174377	3D ballplate	1	PCS	5707292996725
9	141802	3D Lockdisc M6	1	PCS	5707292950277
10	160820	Spring ø1,0 x ø13,3 x 20	1	PCS	5707292984616
11	138237	Arm Right	1	PCS	5707292964830
12	1310528	Covering stud, black 13mm	1	PCS	5707292470348
13	506510	Blindnit M6x14,5	1	PCS	5707292938596
14	141792	Washer Ø10/Ø30x1,5	1	PCS	5707292964793
15	602470	Insex M6x70, stainless	1	PCS	5707292407870
16	1100900	Spring washer M6 fzb, 6.1/9.9	1	PCS	5707292459336
17	602446	Insex M6x50 FZB	1	PCS	5707292995155

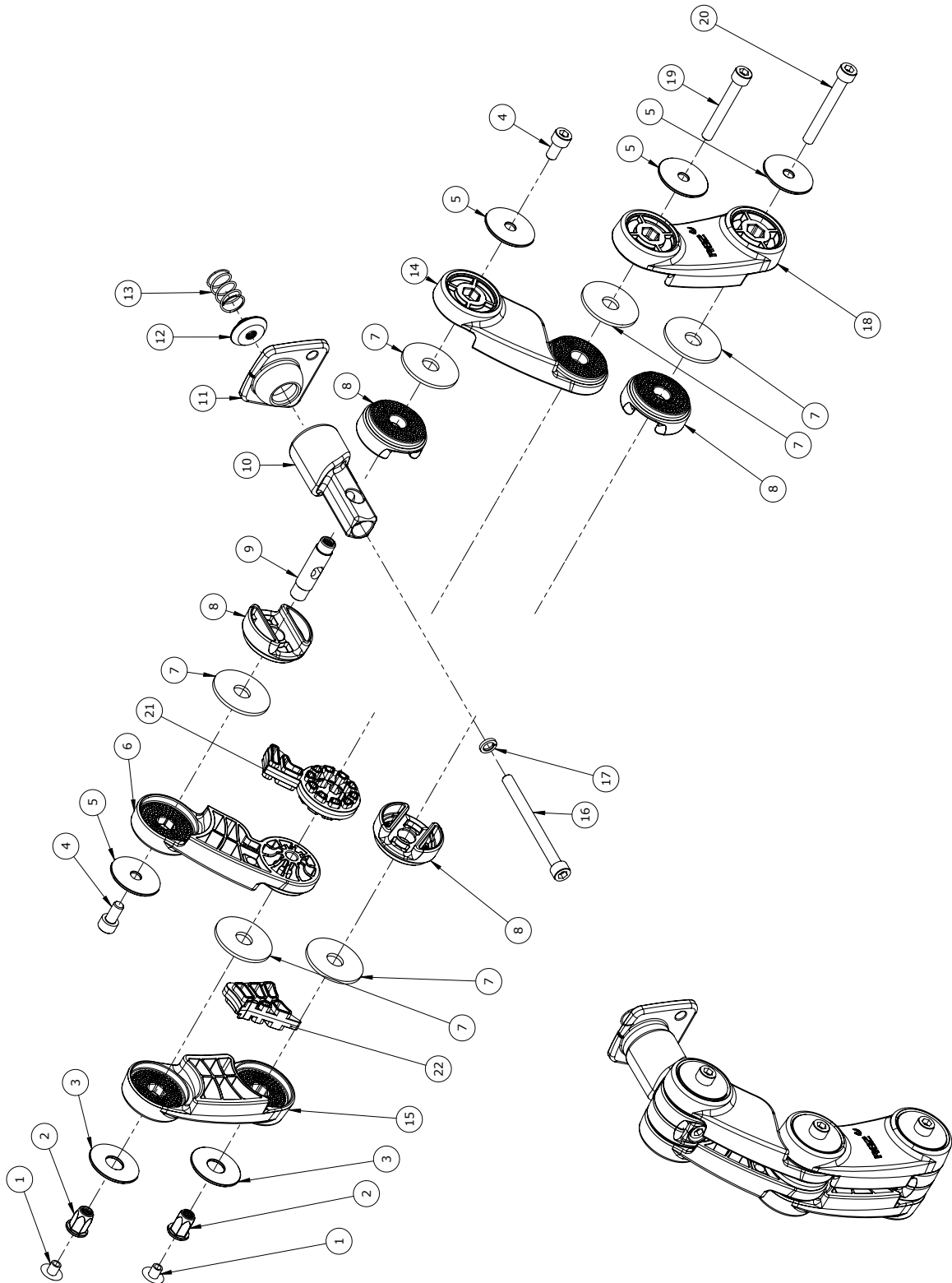
### Turtle bar system extended



## Item numbers for Turtle bar system extended

Position	No.	Description	Quantity	Unit of Measure	Ean code
1	1310528	Covering stud, black 13mm	3	PCS	5707292470348
2	506510	Blindnit M6x14,5	3	PCS	5707292938596
3	141792	Washer Ø10/Ø30x1,5	3	PCS	5707292964793
4	140039	Extension left	1	PCS	5707292964922
5	138214	Friction Disc Ø34	6	PCS	5707292964816
6	138236	Disc Ø38	4	PCS	5707292964823
7	141786	Center arm	1	PCS	5707292964847
8	139656	Extension right	1	PCS	5707292964939
9	138215	Washer 6x30x1,5 black	3	PCS	5707292940544
10	602445	Insex M6x45 FZB	2	PCS	5707292138156
11	602446	Insex M6x50 FZB	1	PCS	5707292995155
12	138237	Arm Right	1	PCS	5707292964830
13	138240	Arm left	1	PCS	5707292964809

### Turtle bar system extended 3D



## Turtle bar system extended 3D

Position	No.	Description	Quantity	Unit of Measure	Ean code
1	1310528	Covering stud, black 13mm	2	PCS	5707292470348
2	506510	Blindnit M6x14,5	2	PCS	5707292938596
3	141792	Washer Ø10/Ø30x1,5	2	PCS	5707292964793
4	602190	Insex screw 6x12	2	PCS	5707292138088
5	138215	Washer 6x30x1,5 black	4	PCS	5707292940544
6	140039	Extension left	1	PCS	5707292964922
7	138214	Friction Disc Ø34	6	PCS	5707292964816
8	138236	Disc Ø38	4	PCS	5707292964823
9	141790	Ø10 axle M6	1	PCS	5707292950307
10	138289	3D arm	1	PCS	5707292950291
11	174377	3D ballplate	1	PCS	5707292996725
12	141802	3D Lockdisc M6	1	PCS	5707292950277
13	160820	Spring ø1,0 x ø13,3 x 20	1	PCS	5707292984616
14	139656	Extension right	1	PCS	5707292964939
15	138240	Arm left	1	PCS	5707292964809
16	602470	Insex M6x70, stainless	1	PCS	5707292407870
17	1100900	Spring washer M6 fzb, 6.1/9.9	1	PCS	5707292459336
18	138237	Arm Right	1	PCS	5707292964830
19	602445	Insex M6x45 FZB	1	PCS	5707292138156
20	602446	Insex M6x50 FZB	1	PCS	5707292995155