

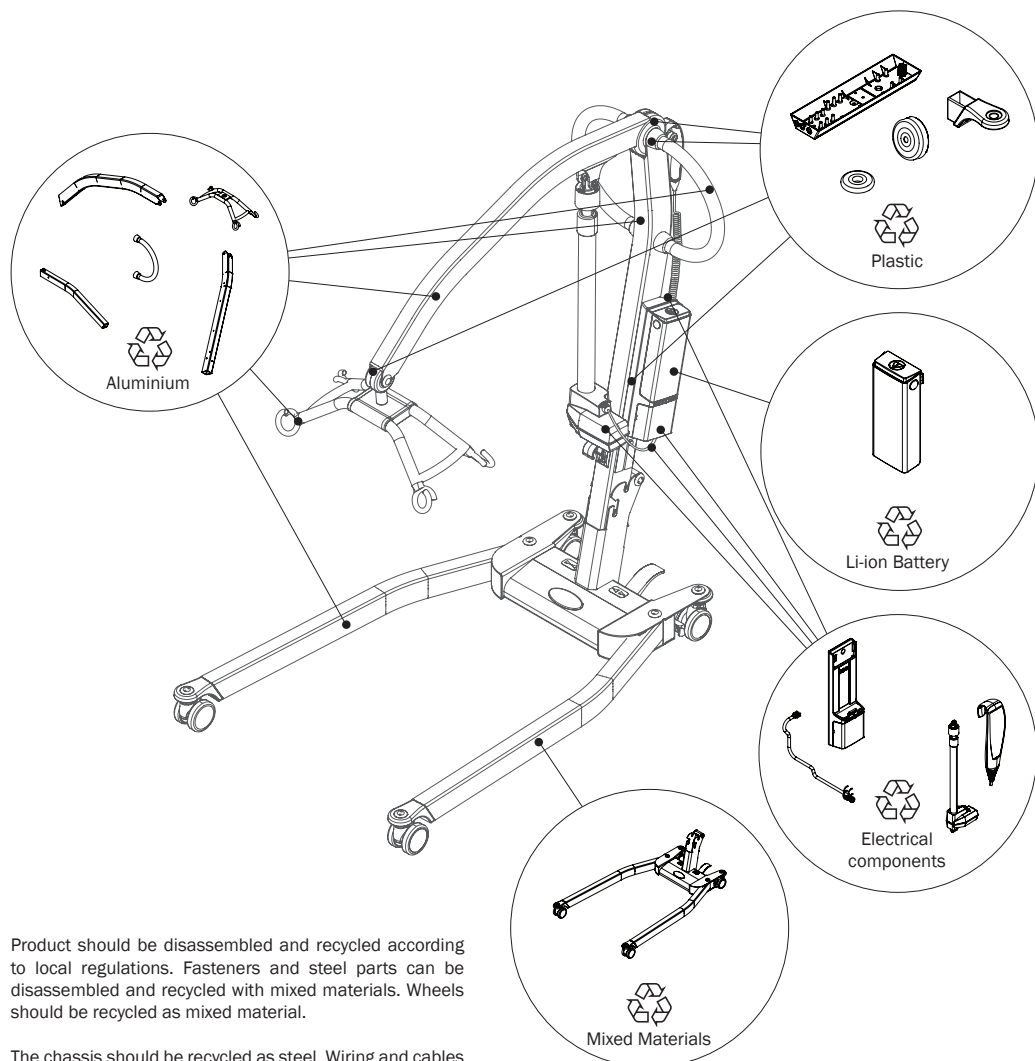


# Recycling instruction – EN

## Molift Smart 150

**molift®**  
by Etac

RI09501 - 2025-03-12 - Rev. 1.0



Product should be disassembled and recycled according to local regulations. Fasteners and steel parts can be disassembled and recycled with mixed materials. Wheels should be recycled as mixed material.

The chassis should be recycled as steel. Wiring and cables should be recycled as electronics.



[www.etac.com](http://www.etac.com)





**Etac Ltd.**

Unit 60, Hartlebury Trading Estate,  
Hartlebury, Kidderminster,  
Worcestershire, DY10 4JB  
+44 121 561 2222



**Sodimed SA**

Ch. Praz-Devant 12  
CH-1032 Romanel-sur-Lausanne  
+41 58 911 06 06



**Etac A/S**

Parallevej 3  
DK-8751 Gedved



+45 796 858 33



[patienthandling@etac.com](mailto:patienthandling@etac.com)



[www.etac.com](http://www.etac.com)

***molift***<sup>®</sup>  
by Etac