

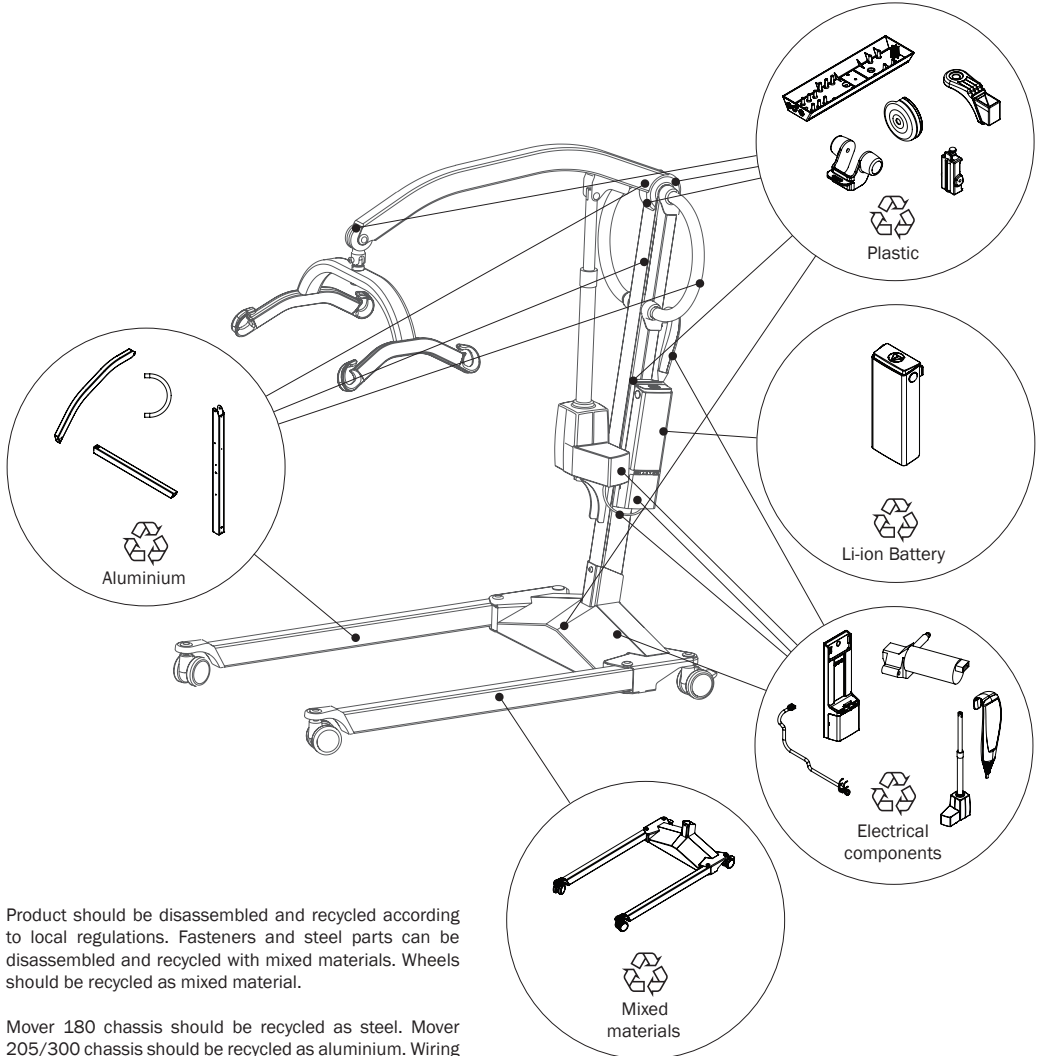


Recycling instruction – EN

Molift Mover 180, 205 and 300

molift[®]
by Etac

RI08201 - 2025-03-12 - Rev. 1.0



Product should be disassembled and recycled according to local regulations. Fasteners and steel parts can be disassembled and recycled with mixed materials. Wheels should be recycled as mixed material.

Mover 180 chassis should be recycled as steel. Mover 205/300 chassis should be recycled as aluminium. Wiring and cables should be recycled as electronics.



www.etac.com





Etac Ltd.

Unit 60, Hartlebury Trading Estate,
Hartlebury, Kidderminster,
Worcestershire, DY10 4JB
+44 121 561 2222



Sodimed SA

Ch. Praz-Devant 12
CH-1032 Romanel-sur-Lausanne
+41 58 911 06 06



Etac A/S

Parallevej 3
DK-8751 Gedved



+45 796 858 33



patienthandling@etac.com



www.etac.com

molift[®]
by Etac