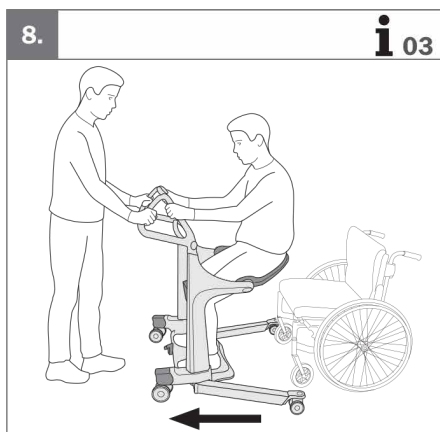
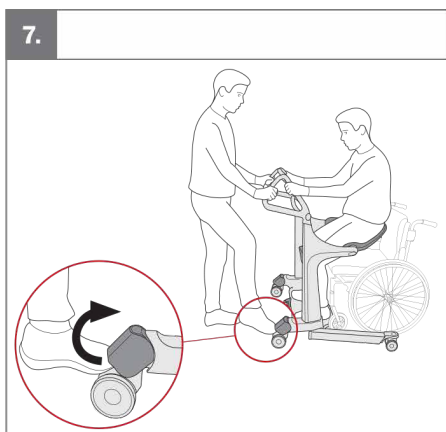
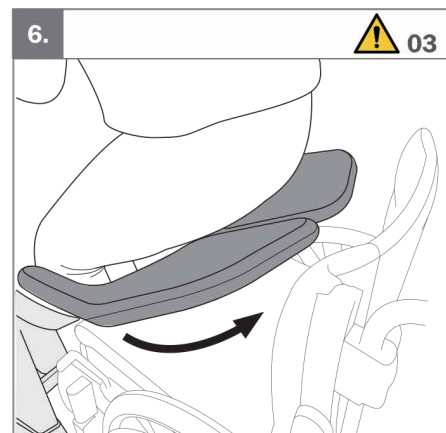
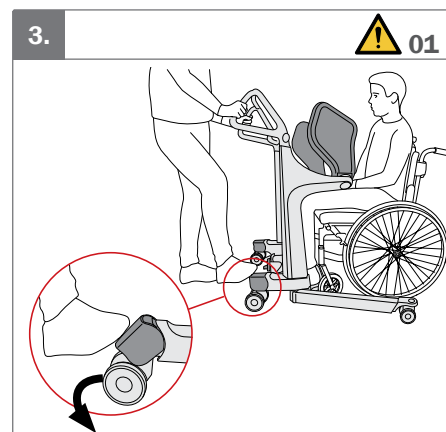
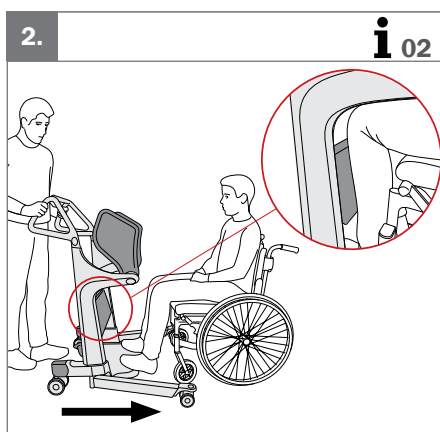
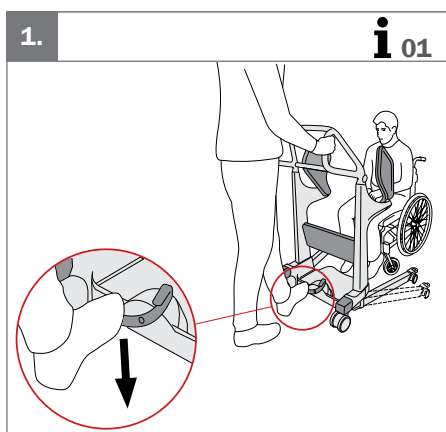


# Transfer Pro

## Hurtigguide

Denne hurtigguiden erstatter ikke produktets brukermanual. Det er viktig å forstå innholdet i brukermanualen før man tar produktet i bruk. Du kan laste ned brukermanualen på [etac.no](http://etac.no).

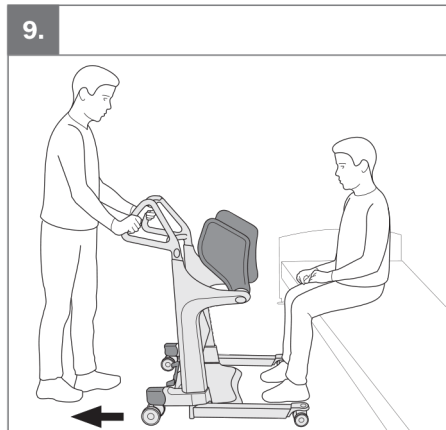
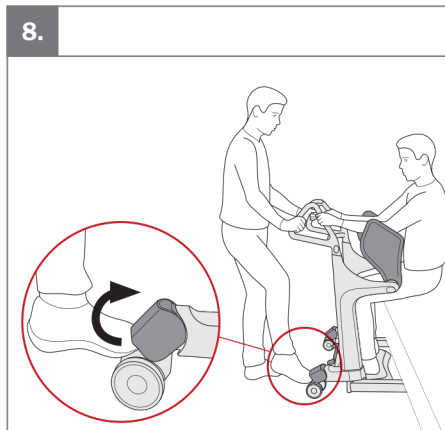
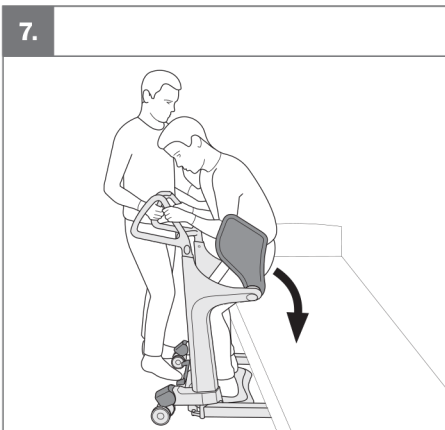
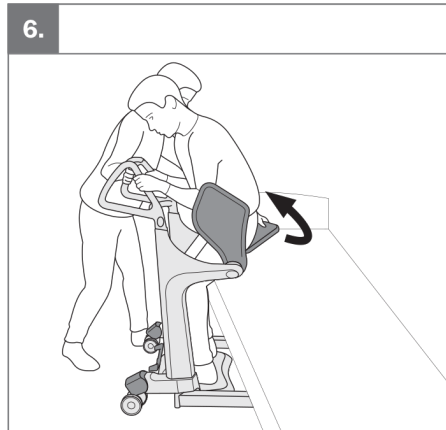
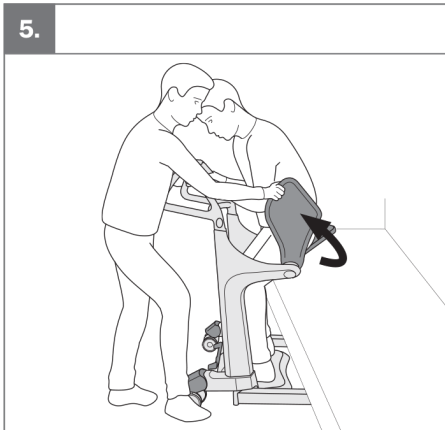
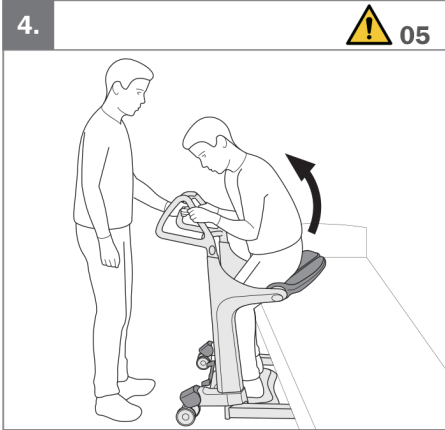
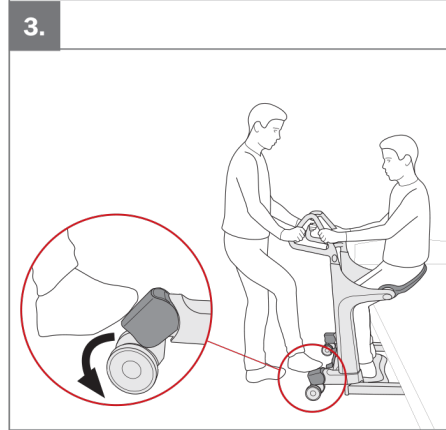
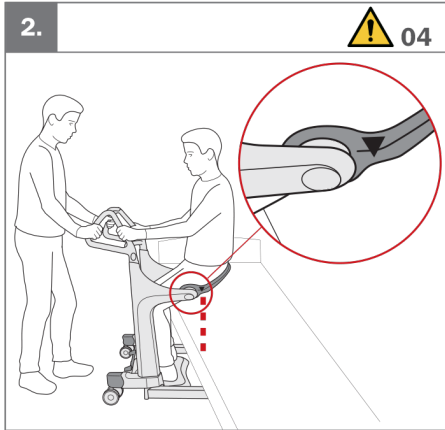
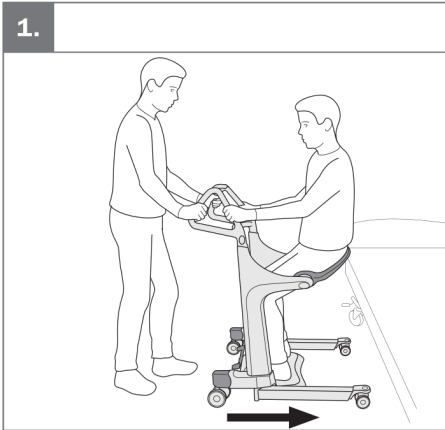


### Advarsler **!**

- 01 Hjulene skal alltid være låst når brukeren beveger seg mellom sittende og stående.
- 02 Brukeren skal alltid holde i håndtakene under forflytning.
- 03 Brukeren skal forbli stående til begge seteplater er foldet ned.

### Informasjon **i**

- 01 Juster bena ved hjelp av pedalen. Til venstre: bredere. Til høyre: smalere.
- 02 Plasser Transfer Pro så benstøtten når brukers skinnlegg.
- 03 Det er valgfritt å flytte de svingbare bena inn igjen under forflytning.



**molift®**

**Advarsler**



- 04 Sørg for at markeringen på seteplaten minimum flukter med setets kant før brukeren setter seg.
- 05 Fold alltid begge seteplatene opp før brukeren setter seg.

**Teknisk data**

 28,2kg / 62lbs
  max 200kg / max 440lbs
  max 200cm / min 149cm

**Vaskeanvisning**


 max 70°C / 10 min
  pH min 5 / max 9