

# R82 Heron

## CAD Retail Price List/ Order Form

Account #: \_\_\_\_\_ Purchase Order No.: \_\_\_\_\_ Date: \_\_\_\_\_  
 Contact: \_\_\_\_\_ Mark For: \_\_\_\_\_

|                 |                 |
|-----------------|-----------------|
| Bill To:        | Ship To:        |
| Address:        | Address:        |
| City/State/Zip: |                 |
| Phone:          | City/State/Zip: |
| Email           | Phone:          |

### US Configuration

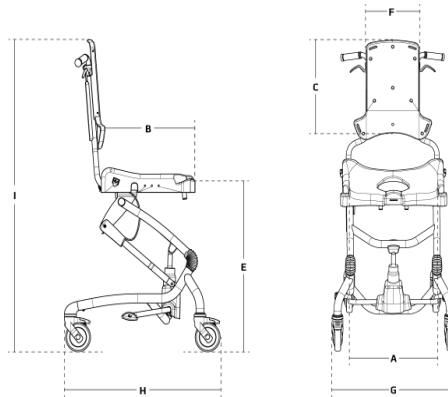
Effective: 01.10.24 - Rev 5

- Heron
- Head support
- Back support
- Swing away side support
- Arm rest/tray
- Foot and hip supports
- Commode pan
- Splash guard
- Vests and belts



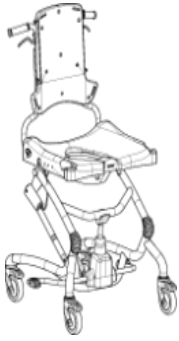
A (Back height) \_\_\_\_\_  
 B (Arm height) \_\_\_\_\_  
 C (Lower leg length) \_\_\_\_\_  
 D (Seat depth) \_\_\_\_\_  
 E (Chest width) \_\_\_\_\_  
 F (Seat width) \_\_\_\_\_  
 G (Height from seat to top of head) \_\_\_\_\_  
 H (Shoulder width) \_\_\_\_\_  
 Age \_\_\_\_\_  
 Weight \_\_\_\_\_

### Measurements



| Heron                                       |              |
|---|--------------|
| Seat width (A)                              | 21¾"         |
| Seat width with hip supports (accessories)  | 13¾"-19¼"    |
| Seat depth (B)                              | 17¾"         |
| Seat depth with reduction kit (accessories) | 15¾"         |
| Back height (C)                             | 21¾"-24½"    |
| Lower leg length (D)                        | 15¾"-22"     |
| Seat height above floor (E)                 | 20-30¾"      |
| Back width (F)                              | 11½"         |
| Width, frame (G)                            | 26½"         |
| Length, frame (H)                           | 28"          |
| Height, frame w/seat (I)                    | 42½"-53¼"    |
| Seat angling (tilt in space)                | -5° to +25°  |
| Back angling                                | 90° to +120° |
| Weight, without arm rests                   | 61.5 lbs.    |
| Max. Load/user weight                       | 220.4 lbs.   |

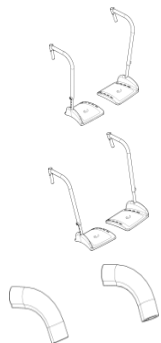
## Heron Standard Features



- One size
- 4 grey castors with locks
- Stainless steel frame
- Height adjustable frame
- Integrated push handles
- Built-in tilt in space
- Built-in recline
- Active, height adjustable back
- Potty ring

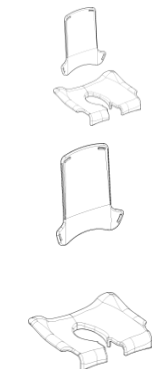
| Description                    | Size     | Part No.  | CAD Price |
|--------------------------------|----------|-----------|-----------|
| <input type="checkbox"/> Heron | One Size | 880505-01 | \$7,002   |

| Accessories | Description | Measurements | Size | Part No. | CAD Price |
|-------------|-------------|--------------|------|----------|-----------|
|-------------|-------------|--------------|------|----------|-----------|



|   |          |           |       |
|---|----------|-----------|-------|
| <input type="checkbox"/> Foot Support, Right-Angled Knee (Pr.)<br><i>(lower leg range: 15 1/2"-22")</i> | One Size | 880506-01 | \$661 |
| <input type="checkbox"/> Foot Support, Open Knee Angle (Pr.)<br><i>(lower leg range: 15 1/2"-22")</i>   | One Size | 880506-02 | \$661 |
| <input type="checkbox"/> Padding for Foot Supports (Pr.)  | One Size | 880506-12 | \$86  |

| Description | Size | Part No. | CAD Price |
|-------------|------|----------|-----------|
|-------------|------|----------|-----------|



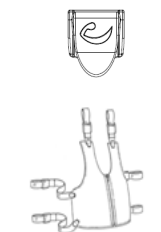
|  |          |           |       |
|--|----------|-----------|-------|
| <input type="checkbox"/> Upholstery, Complete (Set)  | One Size | 880507-01 | \$394 |
| <input type="checkbox"/> Upholstery, Back Only (Ea.) | One Size | 101204    | \$193 |
| <input type="checkbox"/> Upholstery, Seat Only (Ea.) | One Size | 117005    | \$216 |

| Description | Size | Part No. | CAD Price |
|-------------|------|----------|-----------|
|-------------|------|----------|-----------|



|  |                     |          |           |       |
|--|---------------------|----------|-----------|-------|
| <input type="checkbox"/> Armrest, Swing-Away (Pr.) | 2 x 14 1/2 x 9 3/4" | One Size | 880508-03 | \$647 |
|--|---------------------|----------|-----------|-------|

| Description | Size | Part No. | CAD Price |
|-------------|------|----------|-----------|
|-------------|------|----------|-----------|



|  |          |           |       |
|--|----------|-----------|-------|
| <input type="checkbox"/> Fix-Locks, White, Bag of 4 Pcs **<br><b>**Required for use of Vests</b> | One Size | 890505-36 | \$56  |
| <input type="checkbox"/> Vest  | 3        | 89111-340 | \$267 |
| <input type="checkbox"/> Vest  | 4        | 89111-440 | \$267 |
| <input type="checkbox"/> Neoprene Hip-Belt   | 2        | 85423-2   | \$129 |

| Accessories | Description | Measurements | Size | Part No. | CAD Price |
|-------------|-------------|--------------|------|----------|-----------|
|-------------|-------------|--------------|------|----------|-----------|



Sides/Wings (Pr.) 4 x 14" One Size 880508-01 \$114

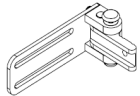


Upholstery for Sides/Wings (Pr.) 4 x 14" One Size 880507-04 \$114



Hip Supports (Pr.) 8¼"W x 4"H One Size 880508-02 \$421  
*(seat width range: 13 ½"-22")*

| Description | Measurements | Size | Part No. | CAD Price |
|-------------|--------------|------|----------|-----------|
|-------------|--------------|------|----------|-----------|



Swing-Away Bracket, Stainless, Right (Ea.) One Size 83000-R \$301

Swing-Away Bracket, Stainless, Left (Ea.) One Size 83000-L \$301



Bar, Straight, Stainless (Ea.) 6¼" One Size 82648 \$0

Bar, Offset, 1" Stainless, (Ea.) 4¾" One Size 150238 \$0

Cushion, Curved (Ea.) 3½ x 7½" One Size 6175407 \$139

Cushion, Curved (Ea.) 2½ x 6½" One Size 6175408 \$139

Cushion, Curved (Ea.) 2½ x 5¾" One Size 6175409 \$139

Protection Pads (Ea.) One Size 89151 \$123

| Description | Measurements | Size | Part No. | CAD Price |
|-------------|--------------|------|----------|-----------|
|-------------|--------------|------|----------|-----------|

Headrest 2, Grey One Size 6172000 \$274

Headrest 3, Grey One Size 6173000 \$274

Headrest 4, Grey One Size 6174000 \$274

**Swing-away Mounting Brackets - Height, Depth, Angle and Lateral Adjustable**

Stainless Turtle Bar System One Size 98619-24 \$307

Stainless Bar System, Straight •• 9" One Size 87583 \$307

Stainless Bar System, Straight •• 14½" One Size 87585 \$307

Stainless Swan Neck •• 7½ x 4" One Size 87580 \$267

Stainless Swan Neck •• 13½ x 7¾" One Size 87582 \$326

••Custom order; Approx. lead time: 6-8 weeks.

| Description | Measurements | Size | Part No. | CAD Price |
|-------------|--------------|------|----------|-----------|
|-------------|--------------|------|----------|-----------|



Tray; Mounted in Armrest 17¼ x 7½" One Size 880508-04 \$421

| Description | Measurements | Size | Part No. | CAD Price |
|-------------|--------------|------|----------|-----------|
|-------------|--------------|------|----------|-----------|



Commode Pan 7¾ x 13½ x 4¾" One Size 880130 \$68

Lid for Commode Pan One Size 880130-L \$86

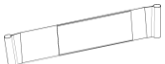
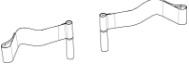




Splash Guard 3 x 5¼" One Size 880508-05 \$93



Splash Guard, Low •• One Size 880508-07 \$85

••Custom order; Approx. lead time: 6-8 weeks.

| Accessories   | Description  | Measurements | Size     | Part No.   | CAD Price |
|---|--|--------------|----------|------------|-----------|
|   | <input type="checkbox"/> Calf Support, Strap (Ea.)   | 4"           | One Size | 880509-01  | \$86      |
|  | <input type="checkbox"/> Heel Stops, Straps (Pr.)  | 1½"          | One Size | 880509-02  | \$160     |
|  | <input type="checkbox"/> Shock Absorber, White ●●<br>●● <i>Custom order; Approx. lead time: 6-8 weeks.</i> |              | One Size | 116924-KIT | \$50      |

| Spare Parts   | Description                         | Measurements | Size     | Part No. | CAD Price |
|---|-------------------------------------|--------------|----------|----------|-----------|
|  | <input type="checkbox"/> Potty Ring |              | One Size | 109072   | \$57      |

*HCPCS codes are provided for your convenience and are NOT to be considered billing or legal advice. Providers are responsible for insuring that all appropriate billing codes are used when submitting claims. Proper use of HCPCS codes does not insure coverage or payment. Contact the appropriate payer for coverage information.*

**Prices in CAD & is subject to change without notice**  
**For Quotes and Orders please send completed Order Form to: [us.info@r82.com](mailto:us.info@r82.com)**

Etac  
13137 Bleinheim Lane  
Matthews, North Carolina 28105  
+1 844-US-MOBILITY (844-876-6245)  
[www.etac.us.com](http://www.etac.us.com)

OF5502-ENG-REV.05

  
Creating Possibilities