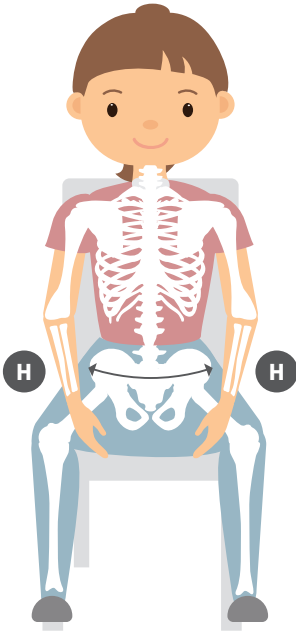


# Pelvis belt

When considering using vests and belts for a child, it is important to choose the correct size in order to ensure the correct positioning and fit. When measuring the child, the measurements should be taken with a flexible tape measure in order to follow the curves of the body.



The fabric covers the area from the top of the pelvis to the seat and provides a backward pull on the pelvis. This aims to prevent the child from sliding forward and out of the seat. The pelvis belt is suitable for smaller children.

For the pelvis belt the measurement should be taken from the hip bone (H) to hip bone (H).

	<b>XS</b>	<b>S</b>	<b>M</b>
<b>Hip (H) to hip (H)</b>	6¼" – 7¾"	7¾" – 9½"	9½" – 11"