



***molift***®

# Molift Rail System

Products and components



A caregiver with a beard and glasses, wearing a white polo shirt, is assisting an elderly male patient in a hospital bed. The patient is wearing a grey t-shirt and blue shorts. A green and white checkered sling is suspended from a silver overhead hoist, supporting the patient. The caregiver is leaning over the bed, holding the patient's arm. The bed has blue pillows and a green and white checkered blanket. The background shows a window with vertical blinds and a white wall.

## Etac - Creating Possibilities

Founded in 1973, Etac is a world-leading developer and provider of ergonomic assistive devices and patient handling equipment. Through our specialised product brands, we offer state-of-the-art products for a wide range of daily needs and care settings, for people at all stages of life. Whether the solution is for a child or an elderly person, our aim is to promote the individual's abilities and improve the caregiver's work environment – through quality, functionality and design.

***molift®***

**Molift** by Etac - Ergonomic hoists, slings and transfer assistive devices enabling safe and comfortable transfers with both caregivers and users in mind.



---

# Thoughtful ergonomics and low cost of ownership

Molift offers a range of ergonomic solutions for moving and handling individuals with reduced mobility. Our commitment to collaborating with healthcare professionals has enhanced the quality of life for users while ensuring caregiver safety.

## Smart, cost-effective hoisting

Molift Rail System and ceiling hoists combine smart design with high quality, ensuring reliable performance and a long lifespan. Designed for seamless integration into various care environments, they enhance user mobility while prioritising caregiver safety. With low service costs and minimal maintenance, Molift Rail System offer a cost-effective solution without compromising safety or efficiency. The ergonomic design reduces strain on caregivers, improving workflow and preventing injuries.

## Reliable Quality and support

Molift offers durable, well-designed solutions that are built to last. Our team provides expert guidance, installation support, and training to help ensure the best possible use and long-term value.

Download the *Molift Rail System - Project Guide* for installation guidance.



## Our standards

Molift products are in compliance with ISO 10535 - Assistive products - Hoists for the transfers of persons.

## Systems for quality assurance

We are working according to ISO 13485, which means that all our work processes, from product development and production of the products to their delivery meets the most stringent medical device quality requirements. Our production site is ISO 13485 certified.

## Traceability

Molift meets all the requirements of ISO 13485 with regard to traceability of our products. All our hoists and slings have bar codes and unique serial numbers to facilitate traceability for our distributors on their market.

## Environmental requirements

We work continuously to minimise the impact of our products and operation regarding the environment, i.e., raw materials, emissions, recycling, and consumption and our manufacturing site is ISO 14001 certified.

## Content

Molift ceiling hoists.....	4
Rail system components .....	8
Free standing gantry systems .....	13
Trolleys .....	14
In rail charging.....	15

For more information, find your customer support on [etac.com](http://etac.com) or contact us at [molift@etac.com](mailto:molift@etac.com).

# Molift ceiling hoists

The lifting function on all Molift Air hoists is performed by a battery-driven motor. All hoist types run on a rail system with a 'smart quick release' function from the trolley, which makes it very easy to engage/disengage the hoist.

Recharging of Molift Air hoists is either by a hand control charger or by in-rail charging, which is performed automatically across the rail layout.

Molift Nomad hoists can only be charged via hand control.

Molift Air Tilt is a hoist type with a motor-driven sling bar, enabling accurate and efficient positioning of the user without causing strain on the caregiver.

All Molift hoists have built-in software as standard (the Service Tool'), enabling data gathering on the use of the hoist. The software can provide service alerts and technical trouble-shooting, as well as allowing verification and adjustment of key parameters.



## Molift Air 200

SWL 205 kg

Molift Air 200 (Li-ion) .....	M26201
Molift Air 200 (SLA) .....	M26200
Molift Air 200 - IRC (SLA) .....	M26356
Molift Air 200 - IRC Propulsion (SLA) .....	M26358
Molift Air 200 - Propulsion (SLA) .....	M26359



## Molift Air 350

SWL 350 kg

Molift Air 350 (Li-ion) .....	M26351
Molift Air 350 (SLA) .....	M26350
Molift Air 350 - IRC (SLA) .....	M26354
Molift Air 350 - IRC Propulsion (SLA) .....	M26353
Molift Air 350 - Propulsion (SLA) .....	M26352



## Molift Air 500

SWL 500 kg

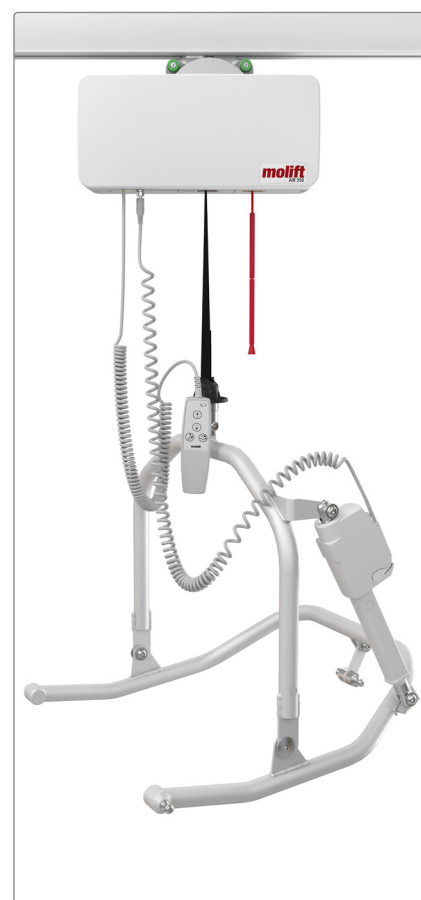
Molift Air 500 (SLA) .....	M26500
----------------------------	--------



## Molift Nomad 205/255

SWL 205/255 kg

Molift Nomad 205 .....	M22205
Molift Nomad 255 .....	M22255

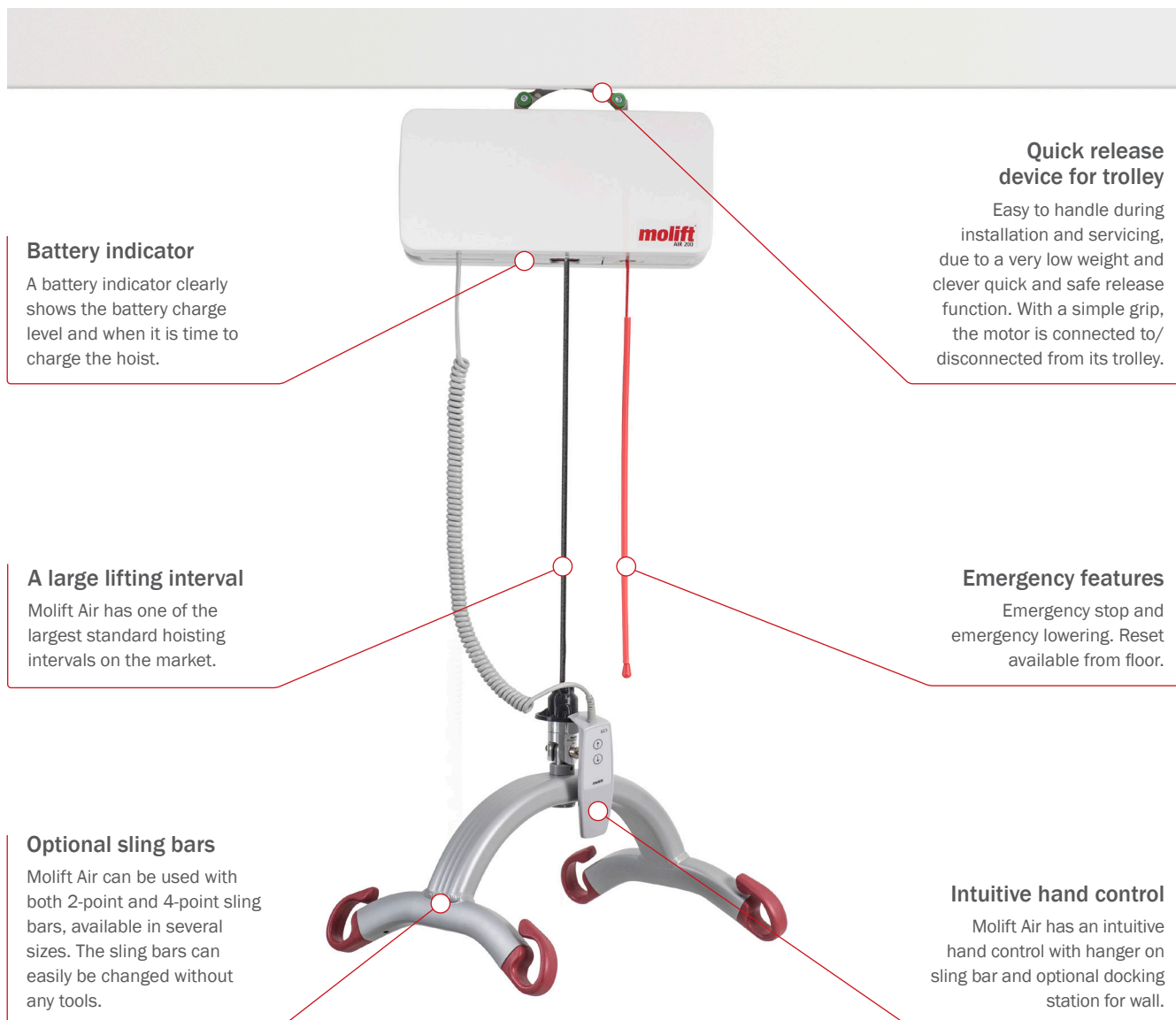


## Molift Air Tilt

SWL 273 kg

Molift Air Tilt (SLA) .....	M26355
-----------------------------	--------

All models includes hoist, handcontrol and charger



### Battery indicator

A battery indicator clearly shows the battery charge level and when it is time to charge the hoist.

### Quick release device for trolley

Easy to handle during installation and servicing, due to a very low weight and clever quick and safe release function. With a simple grip, the motor is connected to/ disconnected from its trolley.

### A large lifting interval

Molift Air has one of the largest standard hoisting intervals on the market.

### Emergency features

Emergency stop and emergency lowering. Reset available from floor.

### Optional sling bars

Molift Air can be used with both 2-point and 4-point sling bars, available in several sizes. The sling bars can easily be changed without any tools.

### Intuitive hand control

Molift Air has an intuitive hand control with hanger on sling bar and optional docking station for wall.

For more product information and specifications. Scan the QR code.



## Accessories



### Molift Air scale class III

SWL 300/400 KG

Scale Molift Air 200 .....1840000

Scale Molift Air 350/500 ..... 1431021



### Molift Nomad scale class III

SWL 300 kg

Scale Molift Nomad .....1100235



### Room to room transfer

Unit for Molift Air .....2510295

## Sling bars

Exchangeable sling bars for Molift Air



### 4-point sling bars

SWL 350 kg

4-pt 350 mm Small .....2530210

4-pt 450 mm Medium .....2530211

4-pt 550 mm Large .....2530212

4-pt 650 mm Extra large .....2530213



### 2-point sling bars

SWL 350 kg

2-pt 350 mm Small .....2530115

2-pt 450 mm Medium .....2530120

2-pt 550 mm Large .....2530125



### 2-point pig tale sling bars

SWL 350 kg

2-pt 350 mm Small .....1830033

2-pt 450 mm Medium .....1830032

2-pt 550 mm Large .....1830031



### 4-point pig tale sling bar

SWL 500 kg

4-pt 550 mm, Large .....2510435



### 8-point sling bar

For transfer situations with a fabric stretcher.

SWL 300 kg

8-pt sling bar .....2140003

8-pt sling bar with Balance bar .....2140004



### Sling Bar Parking

For 2-point sling bars

Sling Bar Parking ..... 1831100





# Rail system components



## Profiles, lengths

Type	Height	Item no. 3 m	Item no. 4 m	Item no. 5 m	Item no. 6 m	Item no. 7 m	Item no. Tailor made*
Rail CC/P	62 mm	1109001-3m	1109001-4m	1109001-5m	1109001-6m		1109001
Rail OC/P	62 mm	1109003-3m	1109003-4m	1109003-5m	1109003-6m		1109003
Rail DC/P	62 mm	1109005-3m	1109005-4m	1109005-5m	1109005-6m		1109005
Rail OC/P	112 mm	1109009-3m	1109009-4m	1109009-5m	1109009-6m		1109009
Rail OC/P	142 mm	1109011-3m	1109011-4m	1109011-5m	1109011-6m	1109011-7m	1109011
Rail W/P	85 mm	1109160-3m	1109160-4m	1109160-5m	1109160-6m		1109160

\*Tailor made rails can be ordered when a specific length is required. Remember to specify required lengths of each article.



## Profiles, Curves

Type	Height	Item no. 30°	Item no. 45°	Item no. 60°	Item no. 90°
Rail CC/P	62 mm	1109105	1109106	1109107	1109108
Rail OC/P	62 mm	1109135	1109136	1109137	1109138
Rail DC/P	62 mm	1109145	1109146	1109147	1109148





#### Telescope bracket set

80-125 mm .....	1109700
120 - 200 mm .....	1109710



#### Support Telescope

Ceiling Brackets .....	1109845
------------------------	---------

Tubular cover and ceiling flange is ordered separately when required



#### Telescope bracket set

190 - 305 mm .....	1110120
290 - 400 mm .....	1110025



#### Tubular cover and flange

Length 500 mm .....	1110142
Flange .....	1109826

#### Telescope bracket set

750-1000 mm .....	1100040
950-1200 mm .....	1110045
1150-1400 mm .....	1110050
1350-1600 mm .....	1110055
1550-1800 mm .....	1110060
1750-2000 mm .....	1110065



#### Rail attachments accessories

T-Profile washer .....	1109307
Multibolt 20 mm .....	1109306
Multibolt 40 mm .....	1109432



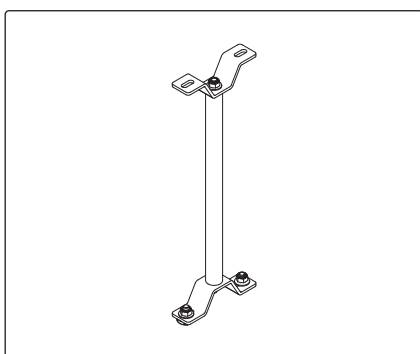
#### Mounting kit

Screw set for telescope bracket .....	1109740
Multibolt 20 mm kit .....	2520221



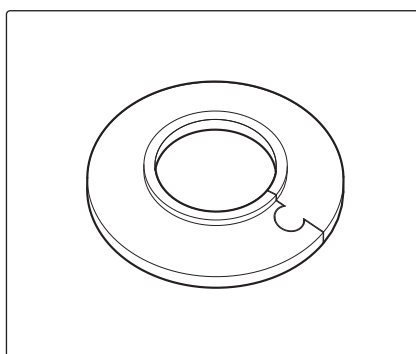
#### Ceiling bracket set

Ceiling bracket set 40 mm .....	1109695
---------------------------------	---------



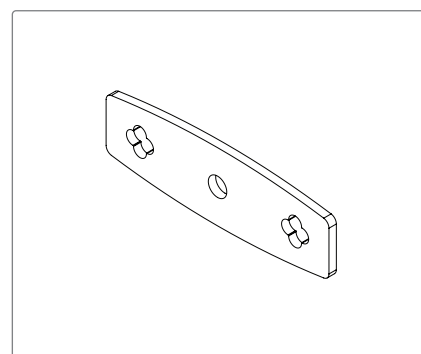
#### Threaded rod w/brackets

M10 Set 1 Meter..... 1109910  
M10 Set 2 Meter..... 1109912  
3/8" Set 36 Inches ..... 1109940  
3/8" Set 72 Inches ..... 1109942



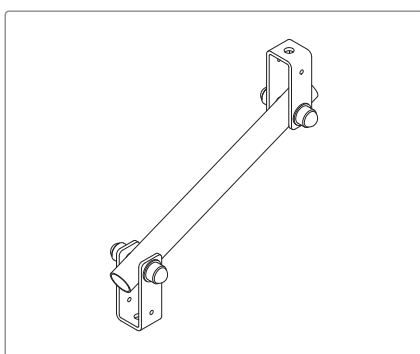
#### Accessory for threaded rod

Sleeve LKF62/28,5/7 ..... 1120338



#### Accessory for threaded rod

Mounting plate for wood rafters..... 1109696



#### Support set

M10 Support Set 1 Meter ..... 1109920  
M10 Support Set 2 Meter ..... 1109922  
3/8" Support Set 36 Inches..... 1109950  
3/8" Support Set 72 Inches..... 1109952



#### Joint mounting kit Short

Used when the bracket is placed above the rail joint.

Joint mounting kit short..... 1109350



#### Joint mounting kit Long

Used when the bracket is placed beside the rail joint.

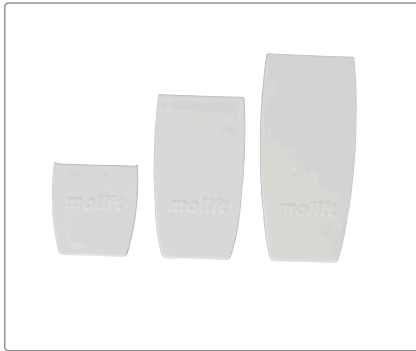
Joint mounting kit long ..... 1109450





#### End stoppers

End stop for motor trolley ..... 1109410  
End stop for traverse trolley..... 1109411



#### End caps

End cap rail H62 ..... 1109340  
End cap rail H112 ..... 1109341  
End cap rail H142 ..... 1109342



#### Upright support H-rail assembly

Lenght 2500 mm ..... 1109220  
Lenght 3500 mm ..... 1109225  
Lenght 2615 mm (Slim)..... 1109265



#### Upright support W-rail assembly

Lenght 2500 mm ..... 1109210  
Lenght 3500 mm ..... 1109215



#### Rail modification for traverse switch

Rail RH62 OC..... 1109671  
Rail RH142 OC ..... 1109672



#### Rail switch

Rail switch ..... 1109066



**Wall bracket unit**

Bracket.....1109259



**Installation example 1**



**Installation example 2**



**Installation example 3**



**Installation example 4**



**Installation example 5**





# Free standing gantry systems

Molift Quattro - A free standing room covering gantry system



Molift Duo - A free standing single gantry system



Product name	Rail length	Item no.
Molift Quattro	3000 x 3000 mm	1600030
Molift Quattro	4000 x 4000 mm	1600035
Adjustable foot		1610200

**Facts**

Height 2190 mm (2240 - 2290 mm with adjustable foot) The length of the posts are fixed. The lowest allowed distance from floor to ceiling is 2.40 meters.  
Maximum user weight (SWL) 300 kg

Product name	Rail length	Item no.
Molift Duo 2000	2000 mm	1600013
Molift Duo 2500	2500 mm	1600015
Molift Duo 3000	3000 mm	1600017
Molift Duo 3500	3500 mm	1600019

**Facts**

Adjustable height: min 2250 mm/max 2550 mm  
Fixed lengths  
Maximum user weigh (SWL) 300 kg

# Trolleys



**Trolley - Molift Air**

Trolley Molift Air 200 .....2520000



**Trolley - Molift Air**

Trolley Molift Air 500 .....2520031



**Propulsion trolley - Molift Air**

Molift Air 350 .....2500103



**Trolley - Nomad for climbing**

Length 500 mm ..... 1109112-50  
Length 650 mm ..... 1109112-65  
Length 800 mm ..... 1109112-80

**Trolley - Nomad**

Standard trolley ..... 1109109



**Travers trolley**

Set including 2 trolleys (for boxed traverses use 1109592)

Traverse trolley set, high ..... 1109580  
Traverse trolley set, medium ..... 1109590  
Traverse trolley set, low ..... 1109592



**Travers trolley - Curtain pass through**

Set including 2 trolleys, SWL 500 kg

Trolley set CPT .....1109596



**Travers trolley - Wall mounted**

Set including 2 trolleys, SWL 500 kg

Trolley set for RH112 ..... 1109163  
Trolley set for RH142 ..... 1109166



**Mounting kit - Travers trolley**

Including bolts, nuts and washers

Traverse mounting kit .....1109345  
Traverse mounting kit, boxed .....1109353



# In rail charging



## Standard trolley IRC

For Molift Air 350 .....2520002



## Propulsion trolley IRC

For Molift Air 350 .....2520006



## Traversal trolley IRC

Set including 2 trolleys and 1 IRC pickup

Traversal trolley set IRC, high ..... 1109581

Traversal trolley set IRC, medium..... 1109591

Traversal trolley set IRC, low ..... 1109594



## Connections IRC

Connection RH62..... 2510224

Connection RH112 .....2510225

Connection RH142.....2510226



## In rail charging power supply

Including bracket and mounting screws

Power supply ..... 2510119



## Conductive tape IRC

Application tool..... 2510125

Conductive tape ..... 2510101





Etac is a world-leading developer of innovative assistive devices and patient handling equipment. Since 1973, we have been committed to improving quality of life for the individual, family members and caregivers.

For the intended purpose of the products and latest information, please visit [www.etac.com](http://www.etac.com)

**Etac**



+46 371 587 330



[info@etac.se](mailto:info@etac.se)



[www.etac.com](http://www.etac.com)

 **etac**®

Creating Possibilities