

Spex® Standard Contour Cushion



CLINICAL

Designed for the user who has moderate to severe positioning and pressure requirements. Excellent choice for individuals who:

- Have changing postural needs over time
- Have a symmetrical or asymmetrical sitting posture that requires correction or control
- Require pelvic comfort and pressure relief/distribution
- Require a high degree of pelvic stability and specific contouring
- Have tight hamstrings/lack of hip flexion
- Need moderate control of abduction or adduction propensities

FUNCTIONAL

- Created as the solution-solver for asymmetrical postures
- Strategic contouring pads offer complete customisations on-the-spot for a perfect fit for the client
- Gel-foam ischial well evenly distributes pressure under the pelvis and in combination with the dual-layer cover, reduces shear forces in sensitive areas
- Coccyx channel for enhanced pressure relief (for sizes 16" +)
- Dual-layer cover reduces shear forces, and breathable air-mesh on cushion sides counters moisture
- Inner incontinence cover included
- Customisable for many requirements such as leg length discrepancies
- Approx. Cushion weight is from 0.7 to 2.6 kg

Width	Length	Trough Height	Cushion Height*	Cushion Code	Spare Cover Code	Incontinence Cover Code
10"	10"	30 mm	2"	1105-1010-OSC	1125-1010-6SC	1135-1010-7SC
"	12"	30 mm	2"	1105-1012-OSC	1125-1012-6SC	1135-1012-7SC
11"	10"	30 mm	2.5"	1105-1110-OSC	1125-1110-6SC	1135-1110-7SC
"	12"	30 mm	2.5"	1105-1112-OSC	1125-1112-6SC	1135-1112-7SC
12"	12"	30 mm	2.5"	1105-1212-OSC	1125-1212-6SC	1135-1212-7SC
"	14"	30 mm	2.5"	1105-1214-OSC	1125-1214-6SC	1135-1214-7SC
13"	12"	30 mm	2.5"	1105-1312-OSC	1125-1312-6SC	1135-1312-7SC
"	14"	30 mm	2.5"	1105-1314-OSC	1125-1314-6SC	1135-1314-7SC
14"	14"	30 mm	2.5"	1105-1414-OSC	1125-1414-6SC	1135-1414-7SC
"	16"	30 mm	2.5"	1105-1416-OSC	1125-1416-6SC	1135-1416-7SC
"	18"	30 mm	2.5"	1105-1418-OSC	1125-1418-6SC	1135-1418-7SC
15"	14"	30 mm	2.5"	1105-1514-OSC	1125-1514-6SC	1135-1514-7SC
"	16"	30 mm	2.5"	1105-1516-OSC	1125-1516-6SC	1135-1516-7SC
16"	16"	30 mm	2.75"	1105-1616-OSC	1125-1616-6SC	1135-1616-7SC
"	18"	30 mm	2.75"	1105-1618-OSC	1125-1618-6SC	1135-1618-7SC
"	20"	30 mm	2.75"	1105-1620-OSC	1125-1620-6SC	1135-1620-7SC
17"	17"	30 mm	2.75"	1105-1717-OSC	1125-1717-6SC	1135-1717-7SC
"	18"	30 mm	2.75"	1105-1718-OSC	1125-1718-6SC	1135-1718-7SC
18"	18"	30 mm	3"	1105-1818-OSC	1125-1818-6SC	1135-1818-7SC
"	20"	30 mm	3"	1105-1820-OSC	1125-1820-6SC	1135-1820-7SC
19"	18"	30 mm	3"	1105-1918-OSC	1125-1918-6SC	1135-1918-7SC
"	20"	30 mm	3"	1105-1920-OSC	1125-1920-6SC	1135-1920-7SC
20"	20"	30 mm	3"	1105-2020-OSC	1125-2020-6SC	1135-2020-7SC
"	22"	30 mm	3"	1105-2022-OSC	1125-2022-6SC	1135-2022-7SC

* Refers to the height from base of cushion to seated surface.

Spex® High Contour Cushion

The Spex High Contour Cushion offers enhanced thigh and abductor support. Key solution to positioning and levelling the pelvis correctly and effectively. Accomplish on-the-spot modifications with the cushion's strategic positioning base.

CLINICAL

Designed for the user who has moderate to severe positioning and pressure requirements. Excellent choice for individuals who:

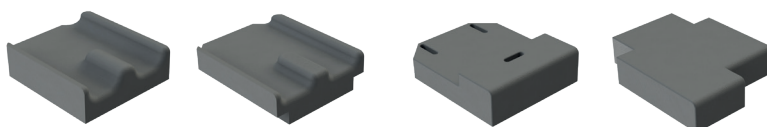
- Need high control of abduction or adduction propensities
- Have changing postural needs over time
- Have a symmetrical or asymmetrical sitting posture that requires correction or control
- Require pelvic comfort and pressure relief/distribution
- Require a high degree of pelvic stability and specific contouring

FUNCTIONAL

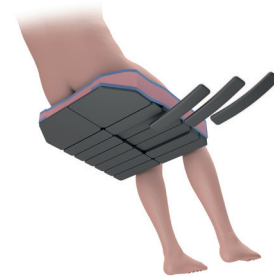
- Positioning base accommodates tight hamstrings/lack of hip flexion
- Created as the solution-solver for asymmetrical postures
- Strategic contouring pads offer complete customisations on-the-spot for a perfect fit for the client
- Gel-foam ischial well evenly distributes pressure under the pelvis and in combination with the dual-layer cover, reduces shear forces in sensitive areas
- Coccyx channel for enhanced pressure relief (for sizes 16" +)
- Dual-layer cover reduces shear forces, and breathable air-mesh on cushion sides counters moisture
- Inner incontinence cover included
- Customisable for many requirements such as leg length discrepancies
- Approx. cushion weight is from 0.8 to 2.7 kg



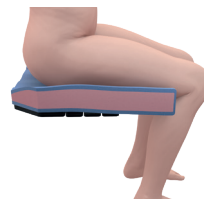
Bespoke modifications can be scripted according to needs of the user.



SPEX STRATEGIC POSITIONING BASE

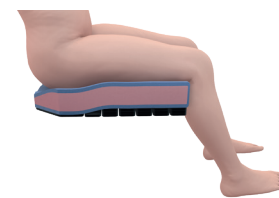


Configure to suit many different postures of persons with disabilities or sitting issues. By adjusting the strategic positioning base, the cushion surface is contoured to improve overall posture, pelvic alignment, sitting ability, comfort and pressure reduction.



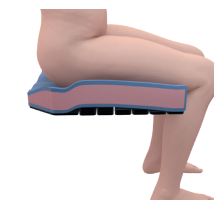
TIGHT HAMSTRINGS / LIMITED HIP FLEXION / POSTERIOR PELVIC TILT

Cushion can be wedged to slope to front with cells added at rear and removed at front.



MANAGEMENT & POSITIONING

Build cells up under thighs for enhanced pre-ischial support and control.



PELVIC ROTATION

To help control pelvis from rotating, create a build-up under the affected leg (in front of the ischial).



Unique dual-layer **SHEAR REDUCTION** fabric surface

Accentuated thigh/adductor and abductor **CONTROL AND SUPPORT**

CUSTOMISE for all sitting postures

Maintain **PELVIC STABILITY** with adjustable positioning base

Width	Length	Trough Height	Cushion Height*	Cushion Code	Spare Cover Code	Incontinence Cover Code
10"	10"	50 mm	2"	1105-1010-OHC	1125-1010-6HC	1135-1010-7HC
"	12"	50 mm	2"	1105-1012-OHC	1125-1012-6HC	1135-1012-7HC
11"	10"	50 mm	2.5"	1105-1110-OHC	1125-1110-6HC	1135-1110-7HC
"	12"	50 mm	2.5"	1105-1112-OHC	1125-1112-6HC	1135-1112-7HC
12"	12"	50 mm	2.5"	1105-1212-OHC	1125-1212-6HC	1135-1212-7HC
"	14"	50 mm	2.5"	1105-1214-OHC	1125-1214-6HC	1135-1214-7HC
13"	12"	50 mm	2.5"	1105-1312-OHC	1125-1312-6HC	1135-1312-7HC
"	14"	50 mm	2.5"	1105-1314-OHC	1125-1314-6HC	1135-1314-7HC
14"	14"	50 mm	2.5"	1105-1414-OHC	1125-1414-6HC	1135-1414-7HC
"	16"	50 mm	2.5"	1105-1416-OHC	1125-1416-6HC	1135-1416-7HC
"	18"	50 mm	2.5"	1105-1418-OHC	1125-1418-6HC	1135-1418-7HC
15"	14"	50 mm	2.5"	1105-1514-OHC	1125-1514-6HC	1135-1514-7HC
"	16"	50 mm	2.5"	1105-1516-OHC	1125-1516-6HC	1135-1516-7HC
16"	16"	50 mm	2.75"	1105-1616-OHC	1125-1616-6HC	1135-1616-7HC
"	18"	50 mm	2.75"	1105-1618-OHC	1125-1618-6HC	1135-1618-7HC
"	20"	50 mm	2.75"	1105-1620-OHC	1125-1620-6HC	1135-1620-7HC
17"	17"	50 mm	2.75"	1105-1717-OHC	1125-1717-6HC	1135-1717-7HC
"	18"	50 mm	2.75"	1105-1718-OHC	1125-1718-6HC	1135-1718-7HC
18"	18"	50 mm	3"	1105-1818-OHC	1125-1818-6HC	1135-1818-7HC
"	20"	50 mm	3"	1105-1820-OHC	1125-1820-6HC	1135-1820-7HC
19"	18"	50 mm	3"	1105-1918-OHC	1125-1918-6HC	1135-1918-7HC
"	20"	50 mm	3"	1105-1920-OHC	1125-1920-6HC	1135-1920-7HC
20"	20"	50 mm	3"	1105-2020-OHC	1125-2020-6HC	1135-2020-7HC
"	22"	50 mm	3"	1105-2022-OHC	1125-2022-6HC	1135-2022-7HC

* Refers to the height from base of cushion to seated surface.

Spex® SuperHigh Contour Cushion

Using the proven Spex strategic positioning base technology, the SuperHigh contour cushion creates an optimum pelvic foundation for the user that requires extra pelvic and hip immersion.

It's properties provide hip/leg envelopment as well as an ideal pressure redistribution all over the seat cushion. The medial thigh support combined with lateral thigh supports maximizes the user stability, providing greater balance and support on upper body. The SuperHigh contour cushion's body-hugging nature delivers comfort and daily sitting relief; while the 3D breathable mesh fabric helps in reducing moisture and temperature.

CLINICAL

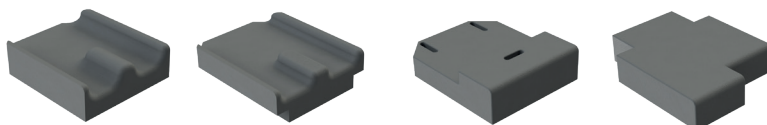
Designed for the user who has moderate to severe positioning requirements. Excellent choice for individuals who:

- Require extra pelvic and hip immersion
- Have muscle tone patterns that require sufficient thigh lateral control. Thigh support is higher for alignment - refer measurement table
- If extremity support can't be maintained through the use of external thigh laterals and/or if installing thigh laterals can't be used, the SuperHigh contour cushion will provide that needed support and stabilization
- Have a symmetrical or asymmetrical sitting posture that requires correction or control/accommodation
- Require pelvic comfort and pressure relief/distribution
- Require a high degree of pelvic stability and specific contouring

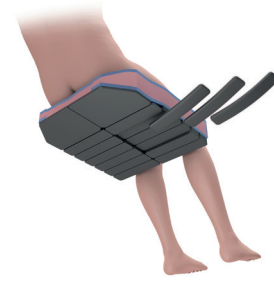
FUNCTIONAL

- Positioning base accommodates tight hamstrings/lack of hip flexion
- No maintenance required. A reliable, peace-of-mind solution!
- Strategic contouring pads offer complete customisations on-the-spot for a perfect fit for the client
- Removable lateral rigidizers which add extra thigh support/alignment
- Gel-foam ischial well evenly distributes pressure under the pelvis and in combination with the dual-layer cover, reduces shear forces in sensitive areas
- Coccyx channel for enhanced pressure relief (for sizes 16"+)
- Dual-layer cover reduces shear forces, and breathable air-mesh on cushion sides counters moisture
- Inner incontinence cover included
- Customisable for many requirements such as leg length discrepancies
- Not compatible with Thigh Supports or Medial Thigh Supports
- Approx. cushion weight is from 0.9 to 2.8 kg
- Now comes as standard with 'Step' lower profile at rear of cushion, for improved hip belt positioning

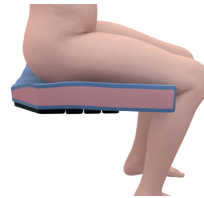
Bespoke modifications can be scripted according to needs of the user.



SPEX® STRATEGIC POSITIONING BASE

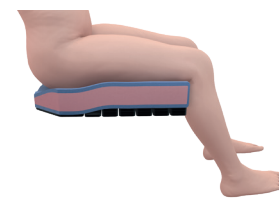


Configure to suit many different postures of persons with disabilities or sitting issues. By adjusting the strategic positioning base, the cushion surface is contoured to improve overall posture, pelvic alignment, sitting ability, comfort and pressure reduction.



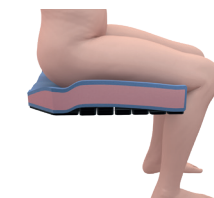
TIGHT HAMSTRINGS / LIMITED HIP FLEXION / POSTERIOR PELVIC TILT

Cushion can be wedged to slope to front with cells added at rear and removed at front.



MANAGEMENT & POSITIONING

Build cells up under thighs for enhanced pre-ischial support and control.



PELVIC ROTATION

To help control pelvis from rotating, create a build-up under the affected leg (in front of the ischial).



Deep **PELVIC IMMERSION**
for ultimate pressure relief
and comfort

Super high medial and lateral
contouring for **STABILITY
AND CONTROL**

Cross-linked foam profiles
for **DURABILITY**

Maintain **PELVIC STABILITY**
with adjustable positioning
base

Width	Length	Trough Height	Cushion Height*	Cushion Code	Spare Cover Code	Incontinence Cover Code
10"	10"	80 mm	2"	1105-1010-OSS	1125-1010-6SS	1135-1010-7SS
"	12"	80 mm	2"	1105-1012-OSS	1125-1012-6SS	1135-1012-7SS
11"	10"	80 mm	2.5"	1105-1110-OSS	1125-1110-6SS	1135-1110-7SS
"	12"	80 mm	2.5"	1105-1112-OSS	1125-1112-6SS	1135-1112-7SS
12"	12"	80 mm	2.5"	1105-1212-OSS	1125-1212-6SS	1135-1212-7SS
"	14"	80 mm	2.5"	1105-1214-OSS	1125-1214-6SS	1135-1214-7SS
13"	12"	80 mm	2.5"	1105-1312-OSS	1125-1312-6SS	1135-1312-7SS
"	14"	80 mm	2.5"	1105-1314-OSS	1125-1314-6SS	1135-1314-7SS
14"	14"	100 mm	2.5"	1105-1414-OSS	1125-1414-6SS	1135-1414-7SS
"	16"	100 mm	2.5"	1105-1416-OSS	1125-1416-6SS	1135-1416-7SS
"	18"	100 mm	2.5"	1105-1418-OSS	1125-1418-6SS	1135-1418-7SS
15"	14"	100 mm	2.5"	1105-1514-OSS	1125-1514-6SS	1135-1514-7SS
"	16"	100 mm	2.5"	1105-1516-OSS	1125-1516-6SS	1135-1516-7SS
16"	16"	100 mm	2.75"	1105-1616-OSS	1125-1616-6SS	1135-1616-7SS
"	18"	100 mm	2.75"	1105-1618-OSS	1125-1618-6SS	1135-1618-7SS
"	20"	100 mm	2.75"	1105-1620-OSS	1125-1620-6SS	1135-1620-7SS
17"	17"	100 mm	2.75"	1105-1717-OSS	1125-1717-6SS	1135-1717-7SS
"	18"	100 mm	2.75"	1105-1718-OSS	1125-1718-6SS	1135-1718-7SS
18"	18"	100 mm	3"	1105-1818-OSS	1125-1818-6SS	1135-1818-7SS
"	20"	100 mm	3"	1105-1820-OSS	1125-1820-6SS	1135-1820-7SS
19"	18"	100 mm	3"	1105-1918-OSS	1125-1918-6SS	1135-1918-7SS
"	20"	100 mm	3"	1105-1920-OSS	1125-1920-6SS	1135-1920-7SS
20"	20"	100 mm	3"	1105-2020-OSS	1125-2020-6SS	1135-2020-7SS
"	22"	100 mm	3"	1105-2022-OSS	1125-2022-6SS	1135-2022-7SS

* Refers to the height from base of cushion to seated surface.