



27627

27342-01

27626-01

27891

27339-01

27625-01

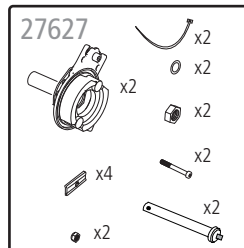
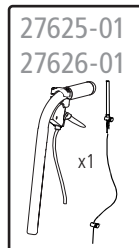
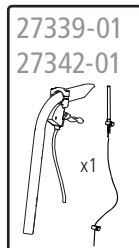
27890



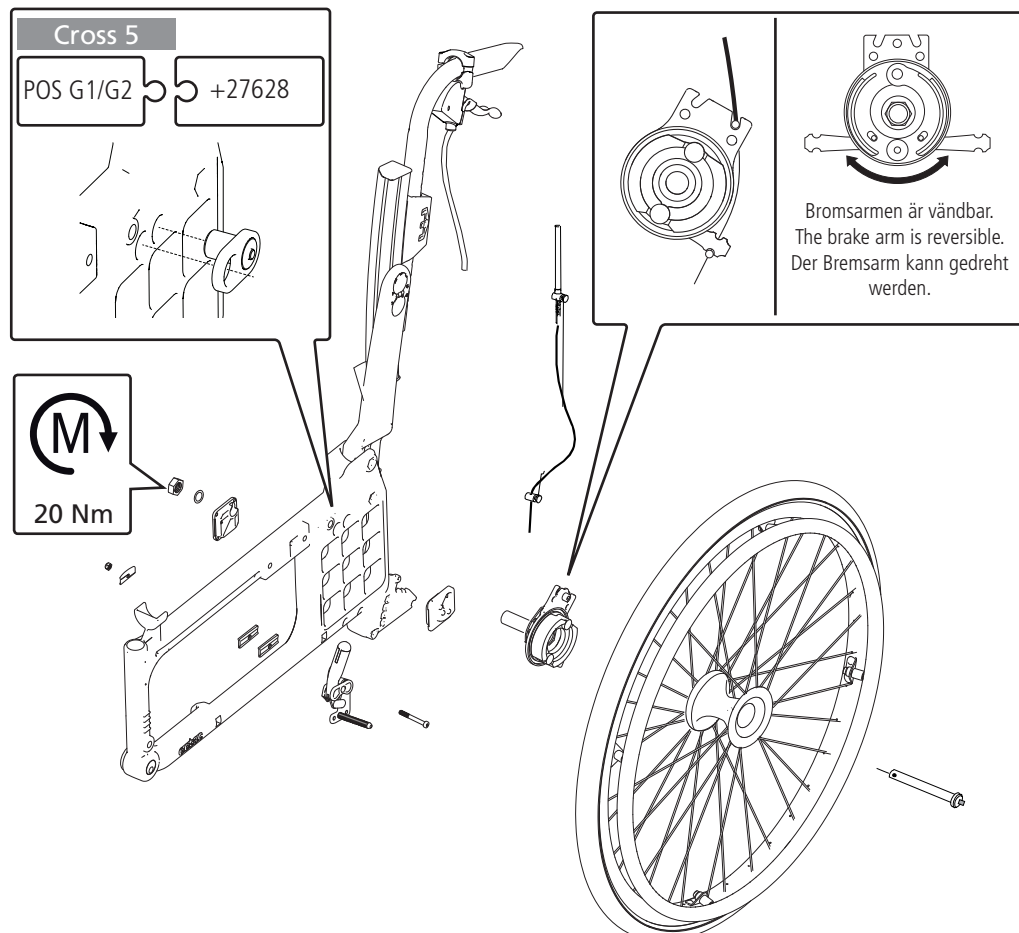
Vårdarbroms Cross 5/Cross 6

Drum Brake System Cross 5/Cross 6

Trommelbremsystem Cross 5/Cross 6



75160.6 22-08-17

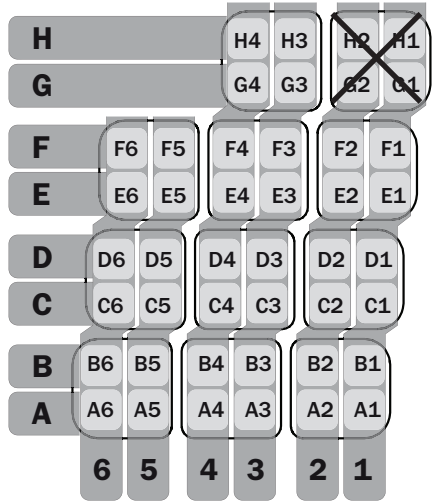
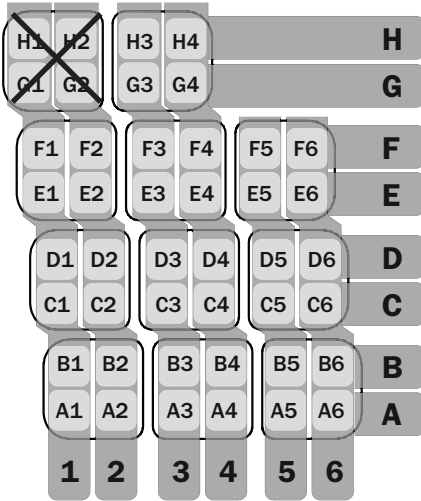


Etac Supply Center AB
Långgatan 12
SE-334 33 Anderstorp
www.etac.com





Cross 6



Pos A1-5, B-E, F1-F2



Pos A6



Pos F3-F6, G3-G4, H3-H4



Pos G1-G2



Pos A1-5, B-E, F1-F2



Pos A6



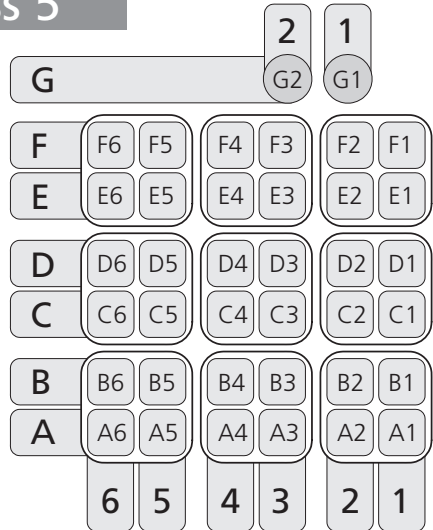
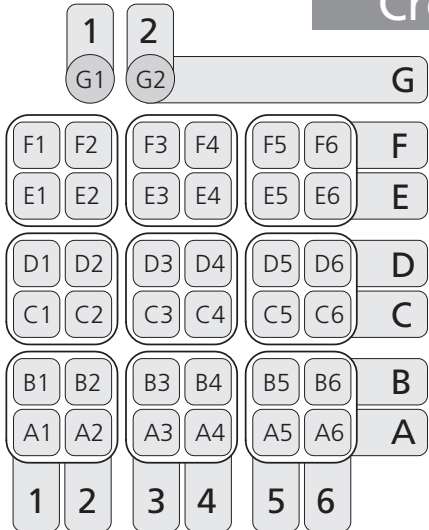
Pos F3-F6, G3-G4, H3-H4



Pos G1-G2



Cross 5



Pos A1-5, B-E, F1-F2



Pos A6



Pos F3-F6



Pos G1-G2



Pos A1-5, B-E, F1-F2



Pos A6



Pos F3-F6



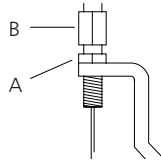
Pos G1-G2



Vid justering av broms lossa muttern (A) och justera bromsen genom att skruva (B) upp/ner. När bromsen tar lagom hårt drag åt muttern (A).

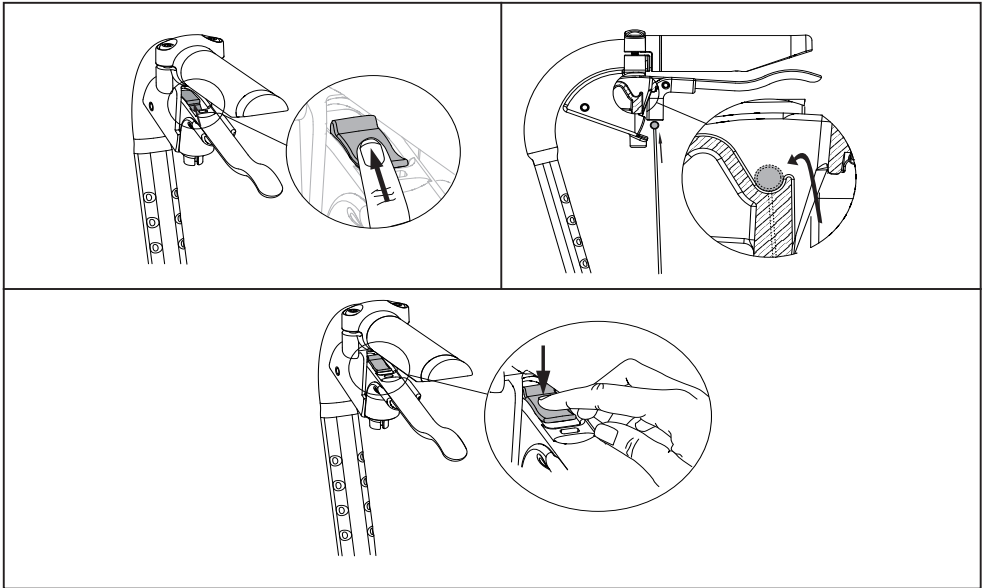
To adjust the brakes, loosen nut (A). Loosen/tighten screw (B) in order to reach proper brake function. Tighten the nut (A).

Zum Einstellen der Bremsen die Mutter (A) lösen. Für die ordnungsgemäße Bremsfunktion Schraube (B) lösen/anziehen. Mutter (A) anziehen.



8 mm

Infästning av bromsvajer/Attach of the brake wire/Feststellen der Bremsgriffe



Om vajerlåset faller bort/If the wire lock is lost/Wenn der Draht Schloß verloren ist

